

The THRAIL AWD1615/40 adjustable rail fixing clip is specially designed for heavy rail. Its greatest advantage is that it has a very low height after installation and it can help to fix the rail on the narrowest steel girder. It can not only minimize

installation cost, but also meet all usages of the cranes with horizontal guide rollers.

SPECIFICATIONS

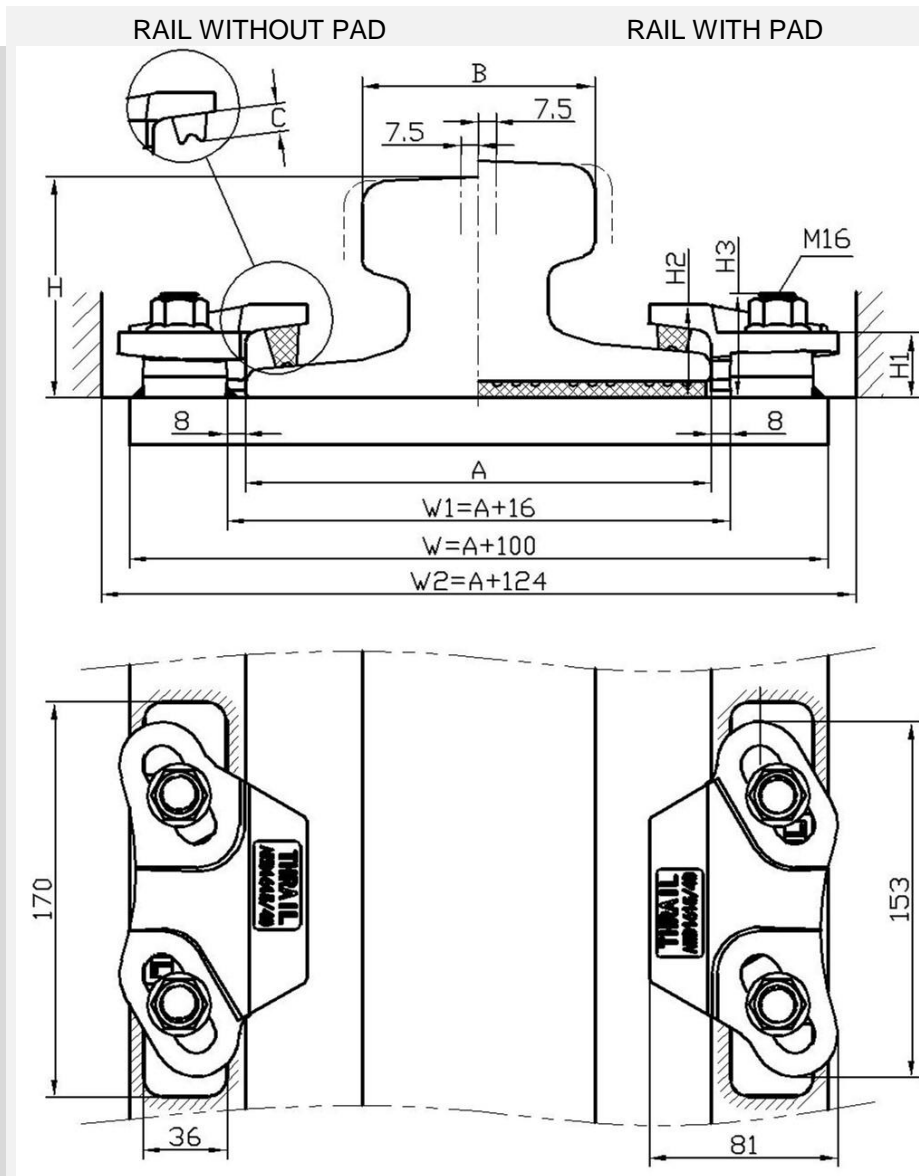
Max side load 165kN 15mm horizontal rail adjustment

DIMENSIONS (mm)

TYPE	H1	H2	H3	ESTIMATED WEIGHT	
AWD1615/40	28	40	45	1.6kg	
Rubber block thickness	RAIL WITH PAD			RAIL WITHOUT PAD	
C	C1	10mm	C3	17mm	
	C2	14mm	C4	21mm	

PRODUCT PERFORMANCE

1. It can be used for all kinds of cranes with or without guide rollers.
2. THRAIL rail clip is equipped with vulcanized integral rubber blocks. It can help reduce noise greatly and improve working environment while fastening rails.
3. The rail fixing clip has a self-locking mechanism which makes the clip locked automatically by the pitched clip cap and weldable base with wedge structure theory.
4. It provides an optimal installation size. It's no need to drill hole on the steel girder when installation. Also the bolts don't need to be threaded through the hole from beneath of the steel girder. Workers only need to weld the weldable base on the steel rail support. The two parts (clip cap and weldable base) are locked together with grade 8.8 bolt.
5. Rail fixing clip with vulcanized rubber blocks helps control the deviation between rail and crane girder. It can be installed easily with impact wrench. Moreover, it provides a great deal of convenience for rail installation and adjustment of the rail lateral movement.



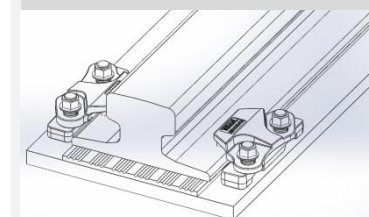
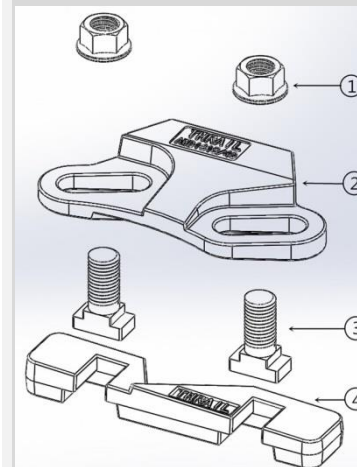
Minimum assembly width

$W = \text{Rail width (A)} + 100\text{mm}$ $W1 = \text{Rail width (A)} + 16\text{mm}$

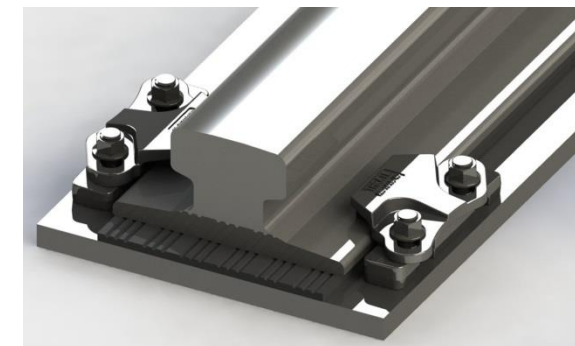
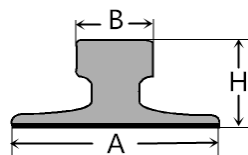
$W2 = \text{Rail width (A)} + 124\text{mm}$

COMPONENTS

1. Flange nut
2. Clip cap with integral rubber block
3. M16 Captive bolt
4. Weldable base

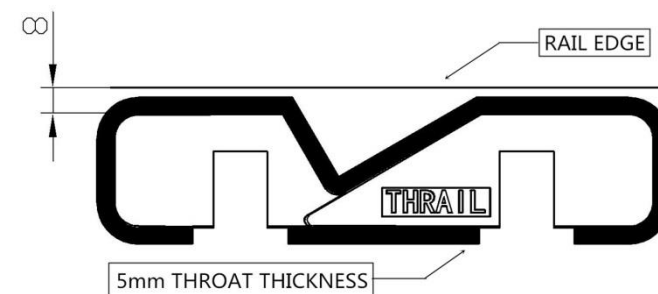


This clip can be used for a wider selection of rails than illustrated. Please contact THRAIL for the full range of possible rails. All rails can be fastened with bolted or welded base clips. THRAIL may change or improve their products and also alter specifications without notice.



RAIL TYPE	A	B mm	H mm	RAIL WITH PAD	RAIL WITHOUT PAD
50kg/m	132	70	152	AWD1615/40(C2)	AWD1615/40(C4)
QU70	120	70	120	AWD1615/40(C2)	AWD1615/40(C4)
QU80	130	80	130	AWD1615/40(C2)	AWD1615/40(C4)
QU100	150	100	150	AWD1615/40(C1)	AWD1615/40(C3)
QU120	170	120	170	AWD1615/40(C1)	AWD1615/40(C3)
A75	200	75	85	AWD1615/40(C2)	AWD1615/40(C4)
A100	200	100	95	AWD1615/40(C1)	AWD1615/40(C3)
A120	220	120	105	AWD1615/40(C1)	AWD1615/40(C3)
A150	220	150	150	AWD1615/40(C1)	AWD1615/40(C3)
S49	125	67	149	AWD1615/40(C2)	AWD1615/40(C4)
89kgCR	178	102	114	AWD1615/40(C1)	AWD1615/40(C3)
MRS67(135CR)	132	79	146	AWD1615/40(C1)	AWD1615/40(C3)
MRS85(171CR)	152	103	152	AWD1615/40(C1)	AWD1615/40(C3)
MRS86	165	102	102	AWD1615/40(C1)	AWD1615/40(C3)
MRS87A(PRI85)	152	102	152	AWD1615/40(C1)	AWD1615/40(C3)
MRS87B(175C)	152	102	152	AWD1615/40(C1)	AWD1615/40(C3)
GCR108	263	61+61	100	AWD1615/40(C1)	AWD1615/40(C3)
GCR183	280	75	120	AWD1615/40(C1)	AWD1615/40(C3)
ISCR100	150	102	150	AWD1615/40(C1)	AWD1615/40(C3)
ISCR120	170	120	170	AWD1615/40(C1)	AWD1615/40(C3)
JIS50	127	63	145	AWD1615/40(C2)	AWD1615/40(C4)
JIS60	145	64	174	AWD1615/40(C2)	AWD1615/40(C4)
CR73	140	100	135	AWD1615/40(C2)	AWD1615/40(C4)
CR100	155	120	150	AWD1615/40(C2)	AWD1615/40(C4)
68kgAS	152	73	186	AWD1615/40(C1)	AWD1615/40(C3)
86kgAS	165	102	102	AWD1615/40(C2)	AWD1615/40(C4)
UIC54E	125	66	161	AWD1615/40(C2)	AWD1615/40(C4)

WELD INSTRUCTION



INSTALLATION INSTRUCTIONS:

Weld all round the clip base with a 5mm throat thickness fillet weld, using low hydrogen electrodes. Recommended electrodes AWS E7018 or E7028. Clip base is made from weldable grade steel. For rail without pad, weld closest to and parallel with the rail must be omitted. Please consult THRAIL for guidance.
TIGHTENING TORQUE 200Nm
 Please contact THRAIL, for full installation instructions.