

The THRAIL AWD2021/42 adjustable rail fixing clip is specially designed for largest rail. Its greatest advantage is that it has a very low height after installation and it can help to fix the rail on the narrowest steel girder. It can not only minimize installation cost, but also

meet all usages of the cranes with horizontal guide rollers.

### SPECIFICATIONS

Max side load 300kN

21mm horizontal rail adjustment

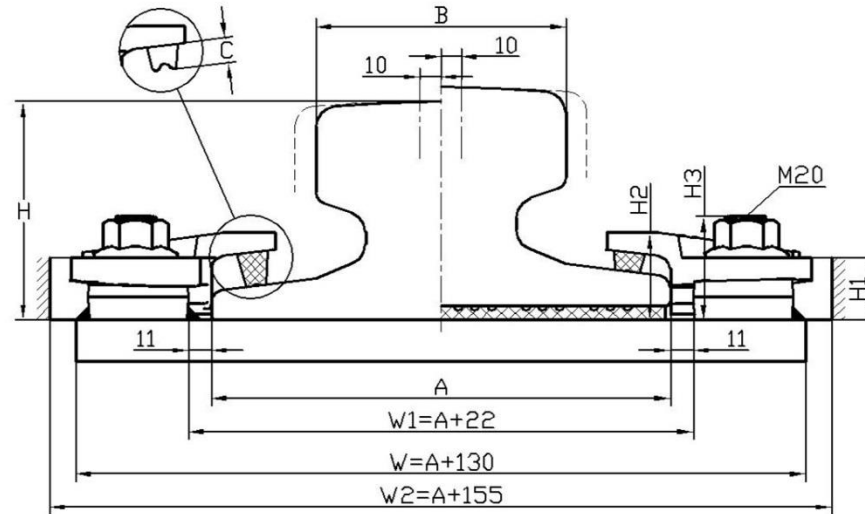
### DIMENSIONS (mm)

TYPE	H1	H2	H3	ESTIMATED WEIGHT	
AWD2021/42	30	42	50	2.3kg	
Rubber Block thickness	RAIL WITH PAD		RAIL WITHOUT PAD		
C	C1	10mm	C3	17mm	
	C2	14mm	C4	21mm	

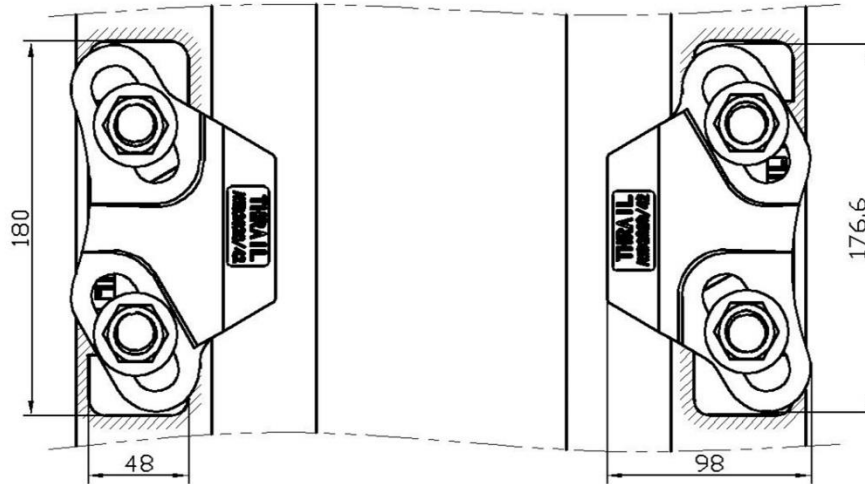
### PRODUCT PERFORMANCE

1. It can be used for all kinds of cranes with or without guide rollers.
2. THRAIL rail clip is equipped with vulcanized integral rubber blocks. It can help reduce noise greatly and improve working environment while fastening rails.
3. The rail fixing clip has a self-locking mechanism which makes the clip locked automatically by the pitched clip cap and weldable base with wedge structure theory.
4. It provides a optimal installation size. It's no need to drill hole on the steel girder when installation. Also the bolts don't need to be threaded through the hole from beneath of the steel girder. Workers only need to weld the weldable base on the steel rail support. The two parts (clip cap and weldable base) are locked together with grade 8.8 bolt.
5. Rail fixing clip with vulcanized rubber blocks helps control the deviation between rail and crane girder. It can be installed easily with impact wrench. More over, it provides a great deal of convenience for rail installation and adjustment of the rail lateral movement.

### RAIL WITHOUT PAD



### RAIL WITH PAD



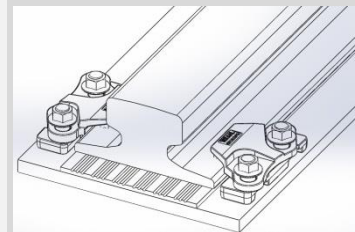
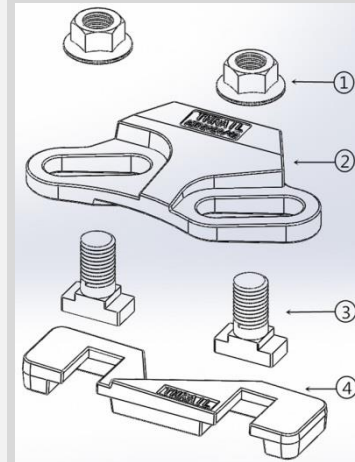
Minimum assembly width

$$W = \text{Rail width (A)} + 130\text{mm} \quad W1 = \text{Rail width (A)} + 22\text{mm}$$

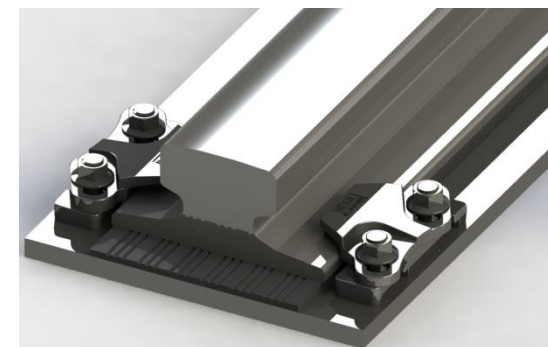
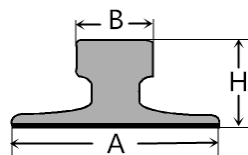
$$W2 = \text{Rail width (A)} + 155\text{mm}$$

### COMPONENTS

1. Flange nut
2. Clip cap with integral rubber block
3. M20 Captive bolt
4. Weldable base

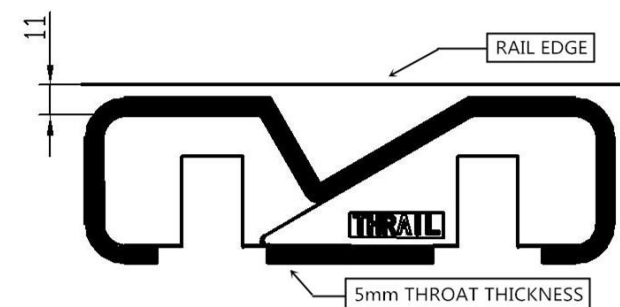


This clip can be used for a wider selection of rails than illustrated. Please contact THRAIL for the full range of possible rails. All rails can be fastened with bolted or welded base clips. THRAIL may change or improve their products and also alter specifications without notice.



RAIL TYPE	A	B mm	H mm	RAIL WITH PAD	RAIL WITHOUT PAD
50kg/m	132	70	152	AWS2021/42(C2)	AWS2021/42(C4)
QU80	130	80	130	AWS2021/42(C2)	AWS2021/42(C4)
QU100	150	100	150	AWS2021/42(C1)	AWS2021/42(C3)
QU120	170	120	170	AWS2021/42(C1)	AWS2021/42(C3)
A100	200	100	95	AWS2021/42(C2)	AWS2021/42(C4)
A120	220	120	105	AWS2021/42(C1)	AWS2021/42(C3)
A150	220	150	150	AWS2021/42(C1)	AWS2021/42(C3)
89kgCR	178	102	114	AWS2021/42(C2)	AWS2021/42(C4)
MRS86	165	102	102	AWS2021/42(C2)	AWS2021/42(C4)
MRS87A(PRI85R)	152	102	152	AWS2021/42(C2)	AWS2021/42(C4)
MRS125	180	120	180	AWS2021/42(C1)	AWS2021/42(C3)
MRS221	220	220	160	AWS2021/42(C1)	AWS2021/42(C3)
ISCR100	150	102	150	AWS2021/42(C2)	AWS2021/42(C4)
ISCR120	170	120	170	AWS2021/42(C2)	AWS2021/42(C4)
ISCR140	170	140	170	AWS2021/42(C1)	AWS2021/42(C3)
ISCOR57	140	70	165	AWS2021/42(C2)	AWS2021/42(C4)
CR73	140	100	135	AWS2021/42(C2)	AWS2021/42(C4)
CR100	155	120	150	AWS2021/42(C2)	AWS2021/42(C4)
73kgAS	146	70	157	AWS2021/42(C2)	AWS2021/42(C4)
86kgAS	165	102	102	AWS2021/42(C2)	AWS2021/42(C4)

## WELD INSTRUCTION



### INSTALLATION INSTRUCTIONS:

Weld all round the clip base with a 5mm throat thickness fillet weld, using low hydrogen electrodes. Recommended electrodes AWS E7018 or E7028. Clip base is made from weldable grade steel. For rail without pad, weld closest to and parallel with the rail must be omitted. Please consult THRAIL for guidance.

TIGHTENING TORQUE 350Nm  
Please contact THRAIL,  
for full installation instructions.