

The THRAIL-HS1610 through-bolted clips (punched clips) are more convenient and efficient in installation. They are more economical in cost than welded clips. THRAIL-HS1610/17

adjustable rail fixing clip is specially designed for light or heavy rails. Its greatest advantage is that it has a very low height after installation and it can help to fix the rail on the narrowest steel girder. It can not only minimize installation cost, but also meet all usages of the cranes with horizontal guide rollers.

### SPECIFICATIONS

Max side load using grade 8.8 bolt 21kN

10mm horizontal rail adjustment

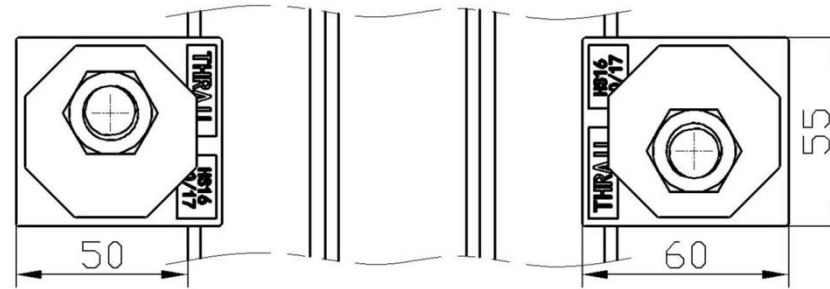
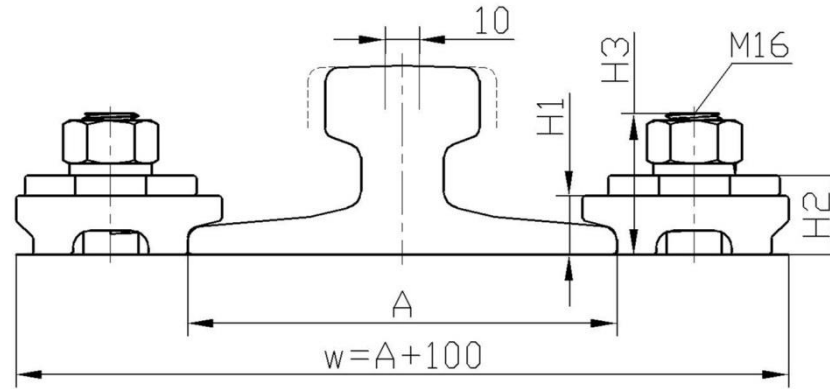
### DIMENSIONS (mm)

TYPE	H1	H2	H3	WEIGHT
HS1610/17	17	23	41	0.35kg

### PRODUCT PERFORMANCE

1. It can be used for all kinds of cranes with or without guide rollers.
2. It provides an optimal installation size. Moreover, it provides a great deal of convenience for rail installation and adjustment of the rail lateral movement.

### RAIL WITHOUT PAD

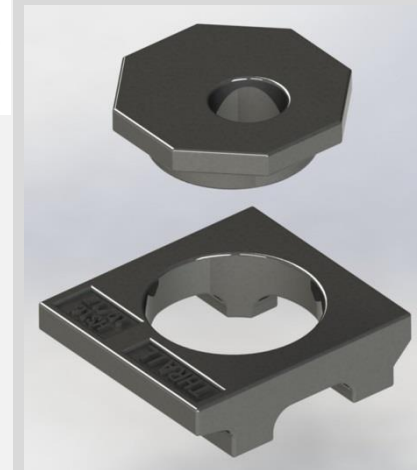
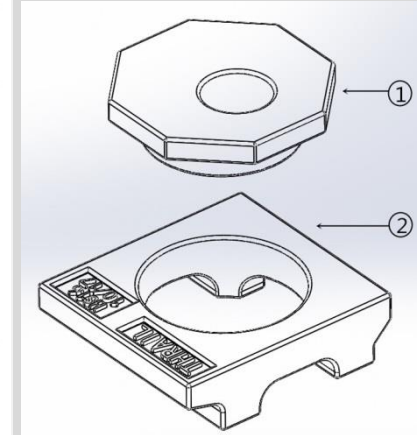


Minimum assembly width

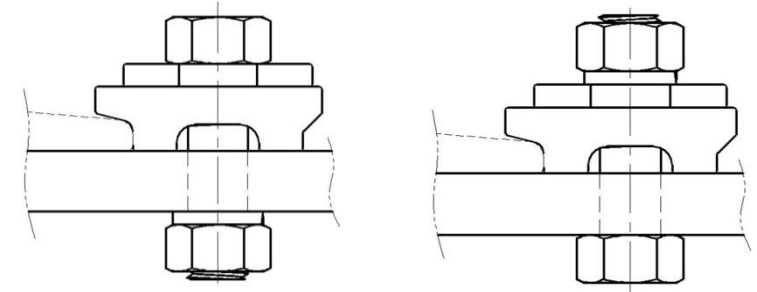
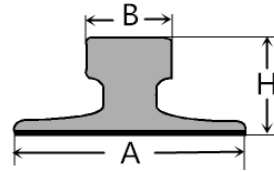
$$W = \text{Rail width (A)} + 100\text{mm}$$

### COMPONENTS

1. rail clip cam
2. rail clip body



This clip can be used for a wider selection of rails than illustrated. Please contact THRAIL for the full range of possible rails. All rails can be fastened with bolted or welded base clips. THRAIL may change or improve their products and also alter specifications without notice.



RAIL TYPE	A mm	B mm	H mm	RAIL WITH PAD	RAIL WITHOUT PAD
24 kg/m	92	107	51	-	HS1610/17
30 kg/m	108	60	107	-	HS1610/17
A45	125	45	55	-	HS1610/17
A55	150	55	65	-	HS1610/17
S30	108	60	108	-	HS1610/17
S41	125	67	138	-	HS1610/17
BS50'0'	100	52	100	-	HS1610/17
AFNOR26	100	50	110	-	HS1610/17
AFNOR30	106	56	126	-	HS1610/17
ASCE60	108	60	108	-	HS1610/17
ASCE80	127	64	127	-	HS1610/17
ASCE85	132	65	132	-	HS1610/17
ISCOR22	95	50	95	-	HS1610/17
ISCOR30	110	57	110	-	HS1610/17
JIS37	122	63	122	-	HS1610/17
JIS40	122	64	140	-	HS1610/17

### INSTALLATION INSTRUCTIONS

The hexagon headed fixing bolt can be inserted from above or below the supporting structure – see adjacent configurations.

If it is desired to fix the clip with a welded stud, this may be possible. Please consult THRAIL for guidance.

#### TIGHTENING TORQUE

Grade 8.8 bolt 200Nm

Please contact THRAIL for full installation instructions.