

The THRAIL-HS2015/21 through-bolted clips (punched clips) are more convenient and efficient in installation. They are more economical in cost than welded

clips. THRAIL-HS2015/21 adjustable rail fixing clip is specially designed for heavy rails. Its greatest advantage is that it has a very low height after installation and it can help to fix the rail on the narrowest steel girder. It can not only minimize installation cost, but also meet all usages of the cranes with horizontal guide rollers.

### SPECIFICATIONS

Max side load using grade 8.8 bolt 75kN

15mm horizontal rail adjustment

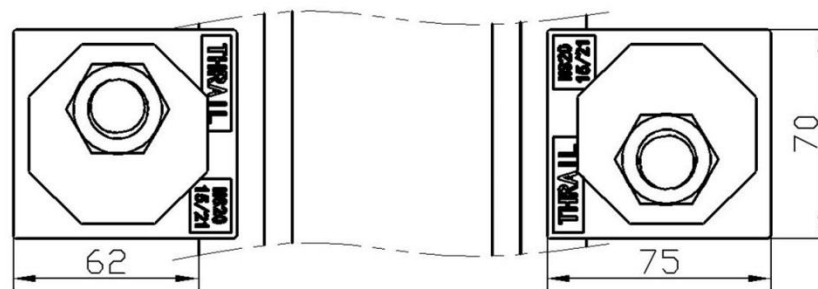
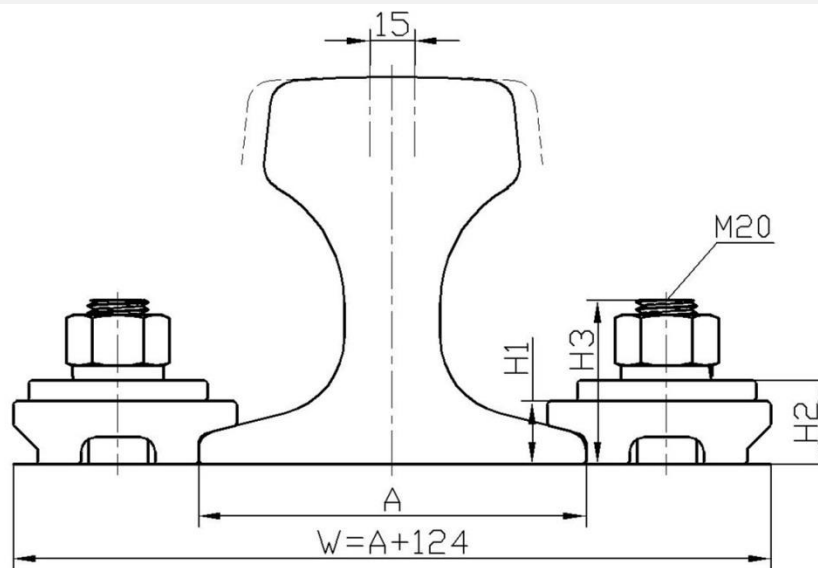
### DIMENSIONS (mm)

TYPE	H1	H2	H3	WEIGHT
THRAIL HS2015/21	21	28	55	0.61kg

### PRODUCT PERFORMANCE

1. It can be used for all kinds of cranes with or without guide rollers.
2. It provides a optimal installation size. More over, it provides a great deal of convenience for rail installation and adjustment of the rail lateral movement.

### RAIL WITHOUT PAD

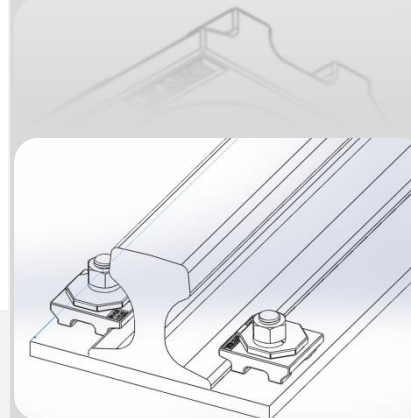
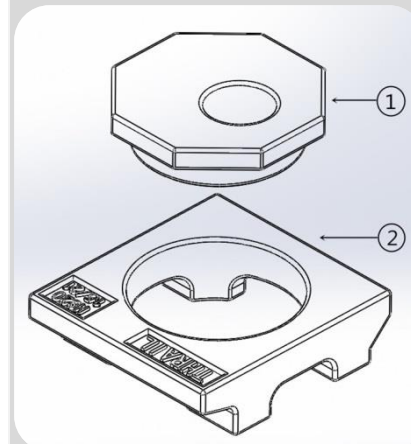


Minimum assembly width

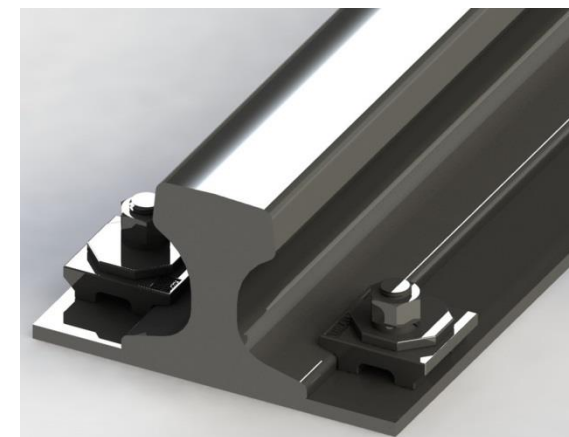
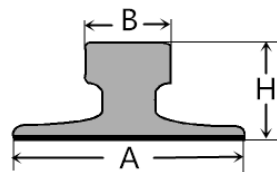
$$W = \text{Rail width (A)} + 124\text{mm}$$

### COMPONENTS

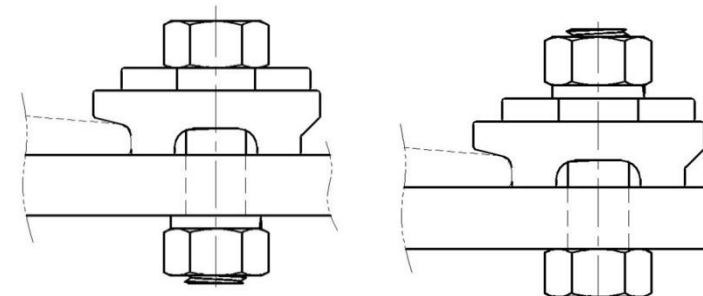
1. rail clip cam
2. rail clip body



This clip can be used for a wider selection of rails than illustrated. Please contact THRAIL for the full range of possible rails. All rails can be fastened with bolted or welded base clips. THRAIL may change or improve their products and also alter specifications without notice.



RAIL TYPE	A mm	B mm	H mm	RAIL WITH PAD	RAIL WITHOUT PAD
38kg/m	114	68	134	-	THRAIL-HS2015/21
43kg/m	114	70	140	-	THRAIL-HS2015/21
50kg/m	132	70	152	-	THRAIL-HS2015/21
QU70	120	70	120	-	THRAIL-HS2015/21
QU80	130	80	130	-	THRAIL-HS2015/21
A65	175	65	75	-	THRAIL-HS2015/21
A75	200	75	85	-	THRAIL-HS2015/21
S41	125	67	138	-	THRAIL-HS2015/21
S49	125	67	149	-	THRAIL-HS2015/21
ISCR80	130	82	130	-	THRAIL-HS2015/21
ASCE80	127	64	127	-	THRAIL-HS2015/21
ASCE85	132	65	132	-	THRAIL-HS2015/21
ISCOR48	127	68	150	-	THRAIL-HS2015/21
ISCOR57	140	70	165	-	THRAIL-HS2015/21
JIS37	122	63	122	-	THRAIL-HS2015/21
31kgAS	108	64	118	-	THRAIL-HS2015/21
41kgAS	127	64	137	-	THRAIL-HS2015/21
50kgAS	127	70	154	-	THRAIL-HS2015/21
UIC54	140	70	159	-	THRAIL-HS2015/21
UIC60	150	72	172	-	THRAIL-HS2015/21
56 E 1	140	70	159	-	THRAIL-HS2015/21



### INSTALLATION INSTRUCTIONS

The hexagon headed fixing bolt can be inserted from above or below the supporting structure – see adjacent configurations.

If it is desired to fix the clip with a welded stud, this may be possible. Please consult THRAIL for guidance.

#### TIGHTENING TORQUE

Grade 8.8 bolt 390KN

Please contact THRAIL for full installation instructions.