

The THRAIL-HS2420 through-bolted clips (punched clips) are more convenient and efficient in installation. They are more economical in cost than welded

clips. THRAIL-HS2420 adjustable rail fixing clip is specially designed for heavy rails. Its greatest advantage is that it has a very low height after installation and it can help to fix the rail on the narrowest steel girder. It can not only minimize installation cost, but also meet all usages of the cranes with horizontal guide rollers.

SPECIFICATIONS

Max side load using grade 8.8 bolt 125kN

20mm horizontal rail adjustment

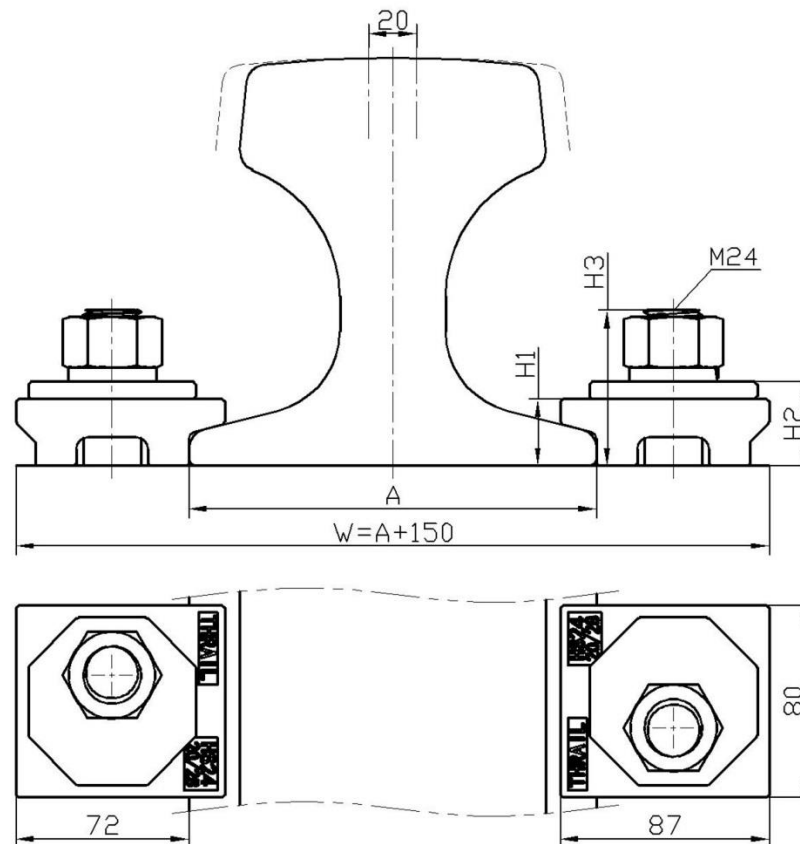
DIMENSIONS (mm)

TYPE	H1	H2	H3	WEIGHT
HS2420/26	26	33	65	0.93kg
HS2420/28	28	35	65	0.95kg

PRODUCT PERFORMANCE

1. It can be used for all kinds of cranes with or without guide rollers.
2. It provides a optimal installation size. More over, it provides a great deal of convenience for rail installation and adjustment of the rail lateral movement.

RAIL WITHOUT PAD

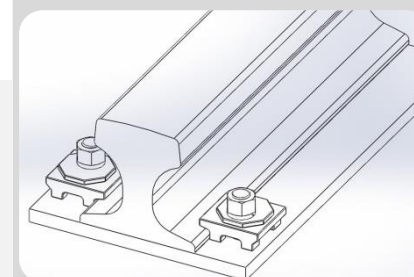
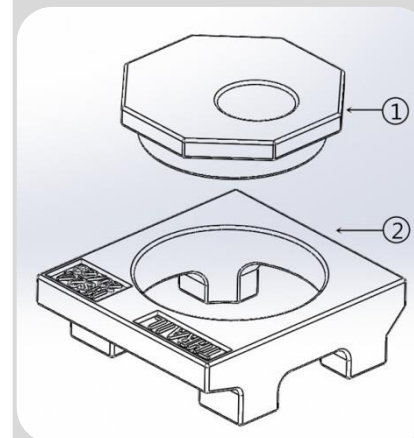


Minimum assembly width

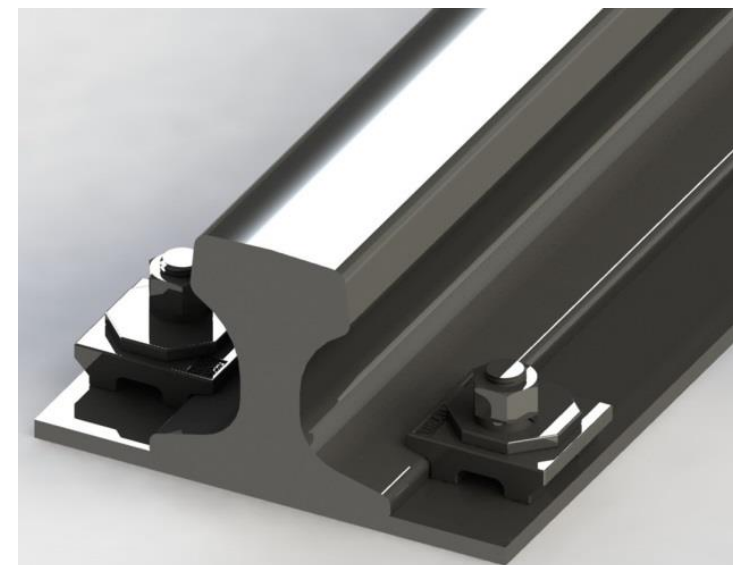
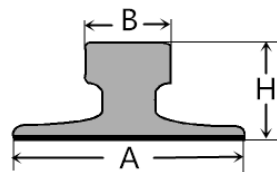
$$W = \text{Rail width (A)} + 150\text{mm}$$

COMPONENTS

1. rail clip cam
2. rail clip body

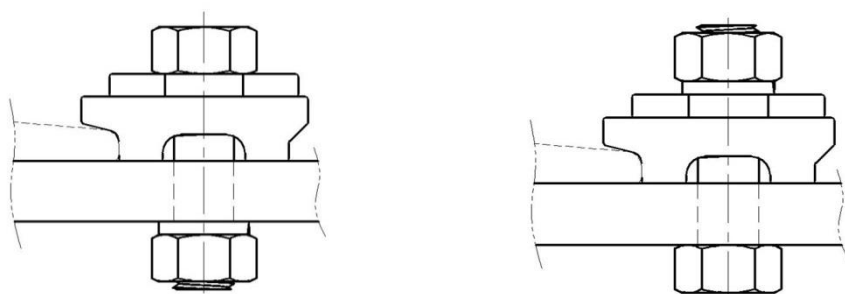


This clip can be used for a wider selection of rails than illustrated. Please contact THRAIL for the full range of possible rails. All rails can be fastened with bolted or welded base clips. THRAIL may change or improve their products and also alter specifications without notice.



RAIL TYPE	A mm	B mm	H mm	RAIL WITH PAD	RAIL WITHOUT PAD
QU100	150	100	150	-	THRAIL- HS2420/26
QU120	170	120	170	-	THRAIL- HS2420/28
A100	200	100	95	-	THRAIL- HS2420/26
A120	220	120	105	-	THRAIL- HS2420/28
MRS87	152	102	152	-	THRAIL- HS2420/28
ISCR100	150	102	150	-	THRAIL- HS2420/26
ISCR120	170	120	170	-	THRAIL- HS2420/28
56E1	140	70	159	-	THRAIL- HS2420/26
UIC60	150	72	172	-	THRAIL- HS2420/26

BOLT CONFIGURATIONS



INSTALLATION INSTRUCTIONS

The hexagon headed fixing bolt can be inserted from above or below the supporting structure – see adjacent configurations.

If it is desired to fix the clip with a welded stud, this may be possible. Please consult THRAIL for guidance.

TIGHTENING TORQUE

Grade 8.8 bolt 600KN

Please contact THRAIL for full installation instructions.