

The THRAIL-TS1610 through-bolted clips (punched clips) are more convenient and efficient in installation. They are more economical in cost than welded clips. THRAIL-TS1610/32 adjustable rail fixing clip is specially designed for light rails. Its greatest advantage is that it has a very low height after installation and it can help to fix the rail on the narrowest steel girder. It can not only minimize installation cost, but also meet all usages of the cranes with horizontal guide rollers.

### SPECIFICATIONS

Max side load using grade 8.8 bolt 38kN

10mm horizontal rail adjustment

### DIMENSIONS (mm)

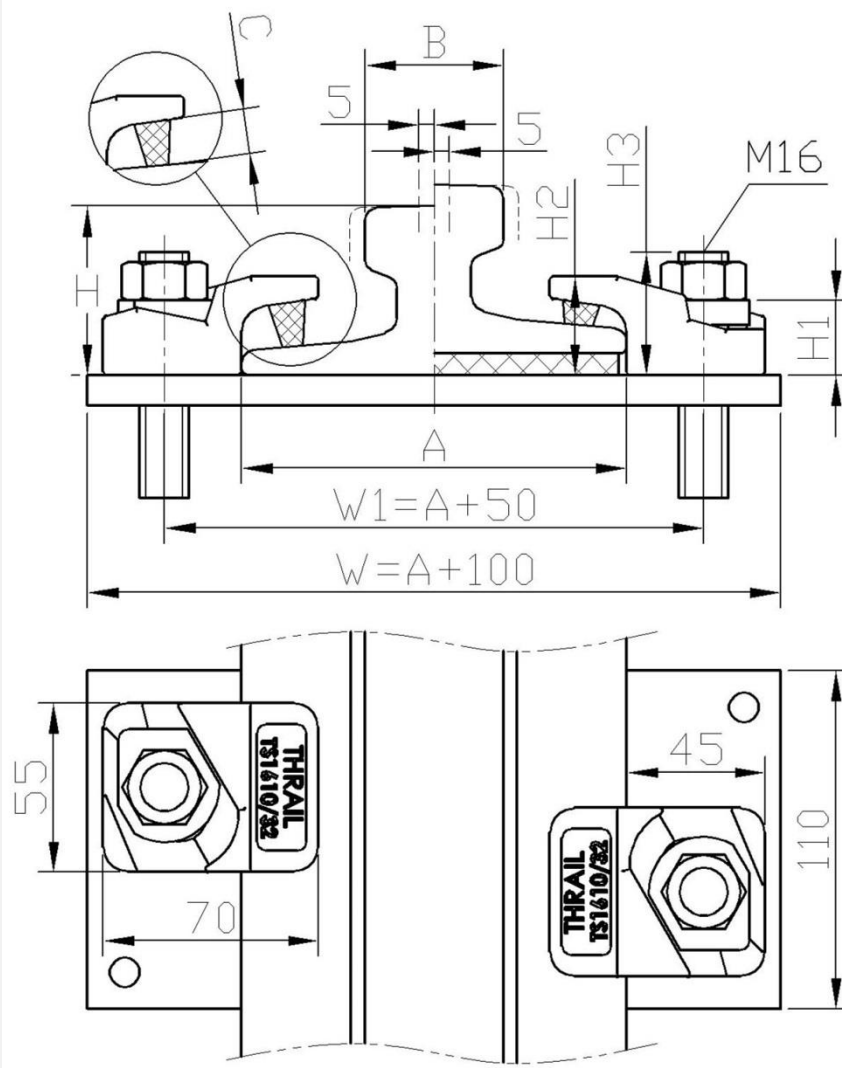
TYPE	H1	H2	H3	WEIGHT
TS1610/32	25	32	40	0.41kg
C (Rubber block thickness)	C1	RAIL WITH PAD		14mm
	C2	RAIL WITHOUT PAD		21mm

### PRODUCT PERFORMANCE

1. It can be used for all kinds of cranes with or without guide rollers.
2. THRAIL rail clip is equipped with vulcanized integral rubber blocks. It can help reduce noise greatly and improve working environment while fastening rails.
3. The rail fixing clip has a self-locking mechanism which makes the clip locked automatically by the pitched clip cap and weldable base with wedge structure theory.
4. It provides an optimal installation size.
5. Rail fixing clip with vulcanized rubber blocks helps control the deviation between rail and crane girder. Moreover, it provides a great deal of convenience for rail installation and adjustment of the rail lateral movement.

### RAIL WITHOUT PAD

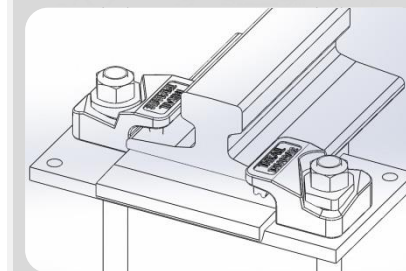
### RAIL WITH PAD



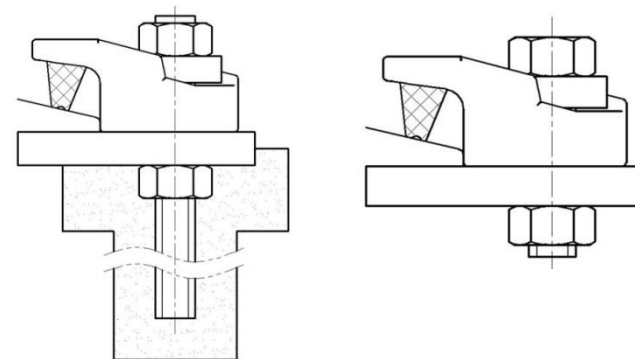
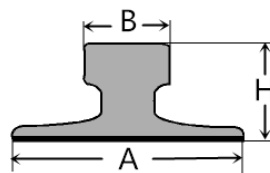
Minimum assembly width -  $W = \text{Rail width (A)} + 100\text{mm}$

### COMPONENTS

1. Special washer
2. Clip with integral rubber block



This clip can be used for a wider selection of rails than illustrated. Please contact THRAIL for the full range of possible rails. All rails can be fastened with bolted or welded base clips. THRAIL may change or improve their products and also alter specifications without notice.



RAIL TYPE	A mm	B mm	H mm	RAIL WITH PAD	RAIL WITHOUT PAD
15kg/m	80	43	80	TS1610/32(C1)	TS1610/32(C2)
18 kg/m	80	40	90	TS1610/32(C1)	TS1610/32(C2)
22 kg/m	94	50	94	TS1610/32(C1)	TS1610/32(C2)
24 kg/m	92	107	51	TS1610/32(C1)	TS1610/32(C2)
30 kg/m	108	60	107	TS1610/32(C1)	TS1610/32(C2)
A45	125	45	55	TS1610/32(C1)	TS1610/32(C2)
A55	150	55	65	TS1610/32(C1)	TS1610/32(C2)
A65	175	65	75	TS1610/32(C1)	TS1610/32(C2)
S14	70	38	80	TS1610/32(C1)	TS1610/32(C2)
S20	82	44	100	TS1610/32(C1)	TS1610/32(C2)
S30	108	60	108	TS1610/32(C1)	TS1610/32(C2)
S41	125	67	138	TS1610/32(C1)	TS1610/32(C2)
BS50'0'	100	52	100	TS1610/32(C1)	TS1610/32(C2)
AFNOR26	100	50	110	TS1610/32(C1)	TS1610/32(C2)
AFNOR30	106	56	126	TS1610/32(C1)	TS1610/32(C2)
ASCE60	108	60	108	TS1610/32(C1)	TS1610/32(C2)
ASCE80	127	64	127	TS1610/32(C1)	TS1610/32(C2)
ASCE85	132	65	132	TS1610/32(C1)	TS1610/32(C2)
ISCOR22	95	50	95	TS1610/32(C1)	TS1610/32(C2)
ISCOR30	110	57	110	TS1610/32(C1)	TS1610/32(C2)
JIS37	122	63	122	TS1610/32(C1)	TS1610/32(C2)
JIS40	122	64	140	TS1610/32(C1)	TS1610/32(C2)
15kg.mBHP	79	43	79	TS1610/32(C1)	TS1610/32(C2)
22kg.mBHP	94	51	94	TS1610/32(C1)	TS1610/32(C2)

## INSTALLATION INSTRUCTIONS

The hexagon headed fixing bolt can be inserted from above or below the supporting structure – see adjacent configurations.

If it is desired to fix the clip with a welded stud, this may be possible. Please consult THRAIL for guidance.

### TIGHTENING TORQUE

Grade 8.8 bolt 200Nm

Please contact THRAIL for full installation instructions.

## POSITIONING OF SPECIAL WASHER

