

The THRAIL-TS2015/35 through-bolted clips (punched clips) are more convenient and efficient in installation. They are more economical in cost than welded clips. THRAIL-TS2015/35 adjustable rail fixing clip is specially designed for heavy rails. Its greatest advantage is that it has a very low height after installation and it can help to fix the rail on the narrowest steel girder. It can not only minimize installation cost, but also meet all usages

of the cranes with horizontal guide rollers.

### SPECIFICATIONS

Max side load using grade 8.8 bolt 75kN

15mm horizontal rail adjustment

### DIMENSIONS (mm)

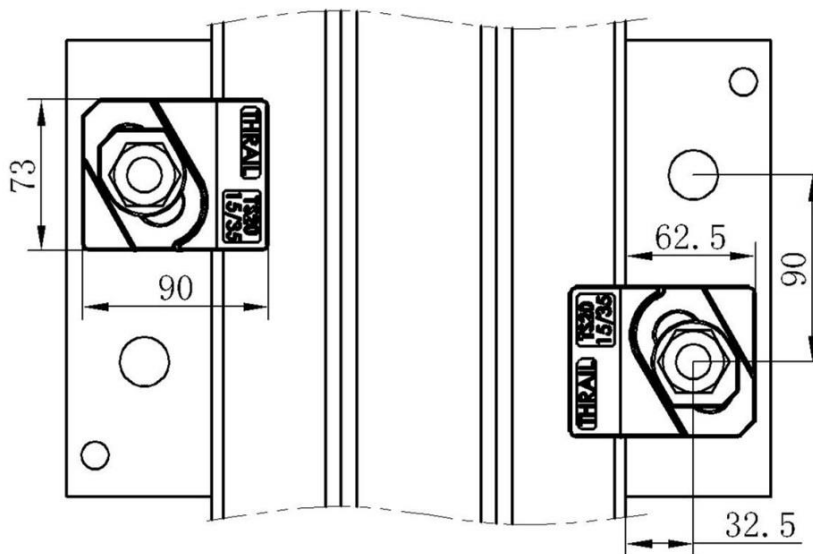
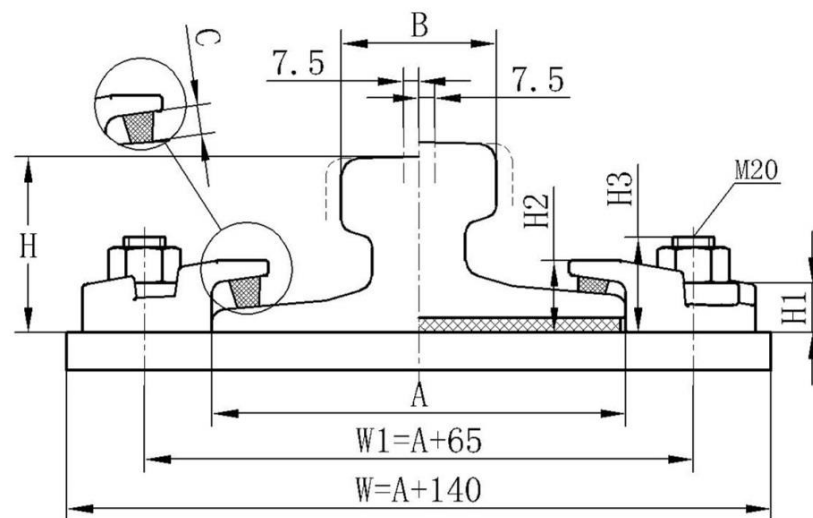
TYPE	H1	H2	H3	WEIGHT
TS2015/35	24	35	46	0.77kg
C (Rubber block thickness)	C1	RAIL WITH PAD		14mm
	C2	RAIL WITHOUT PAD		21mm

### PRODUCT PERFORMANCE

1. It can be used for all kinds of cranes with or without guide rollers.
2. THRAIL rail clip is equipped with vulcanized integral rubber blocks. It can help reduce noise greatly and improve working environment while fastening rails.
3. The rail fixing clip has a self-locking mechanism which makes the clip locked automatically by the pitched clip cap and weldable base with wedge structure theory.
4. It provides an optimal installation size.
5. Rail fixing clip with vulcanized rubber blocks helps control the deviation between rail and crane girder. Moreover, it provides a great deal of convenience for rail installation and adjustment of the rail lateral movement.

RAIL WITHOUT PAD

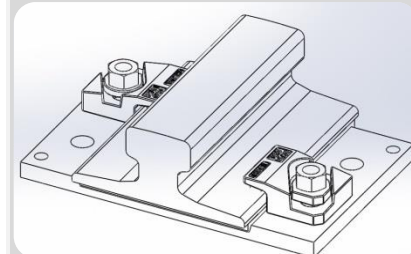
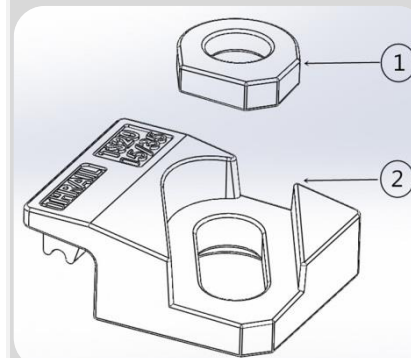
RAIL WITH PAD



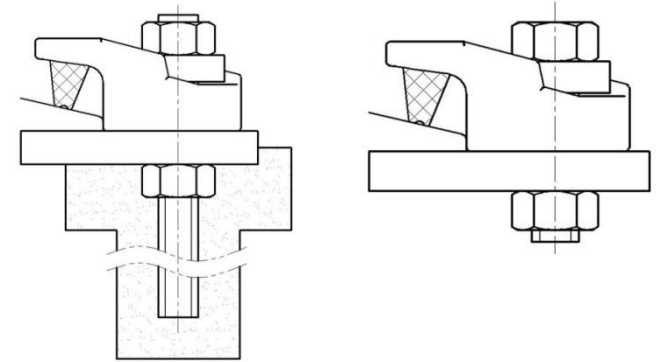
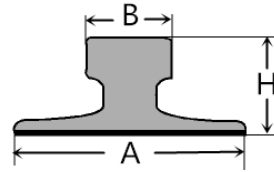
Minimum assembly width -  $W = \text{Rail width (A)} + 140\text{mm}$

### COMPONENTS

1. Special washer
2. Clip with integral rubber block



This clip can be used for a wider selection of rails than illustrated. Please contact THRAIL for the full range of possible rails. All rails can be fastened with bolted or welded base clips. THRAIL may change or improve their products and also alter specifications without notice.



RAIL TYPE	A mm	B mm	H mm	RAIL WITH PAD	RAIL WITHOUT PAD
30kg/m	108	60	108	TS2015/35 (C1)	TS2015/35 (C2)
38kg/m	114	68	134	TS2015/35 (C1)	TS2015/35 (C2)
43kg/m	114	70	140	TS2015/35 (C1)	TS2015/35 (C2)
50kg/m	132	70	152	TS2015/35 (C1)	TS2015/35 (C2)
QU70	120	70	120	TS2015/35 (C1)	TS2015/35 (C2)
QU80	130	80	130	TS2015/35 (C1)	TS2015/35 (C2)
A75	200	75	85	TS2015/35 (C1)	TS2015/35 (C2)
A100	200	100	95	TS2015/35 (C1)	TS2015/35 (C2)
S33	105	58	134	TS2015/35 (C1)	TS2015/35 (C2)
S41	125	67	138	TS2015/35 (C1)	TS2015/35 (C2)
S49	125	67	149	TS2015/35 (C1)	TS2015/35 (C2)
S54	125	67	154	TS2015/35 (C1)	TS2015/35 (C2)
56E1	140	70	159	TS2015/35 (C1)	TS2015/35 (C2)
MRS87A	152	102	152	TS2015/35 (C1)	TS2015/35 (C2)
AFNOR46	134	62	145	TS2015/35 (C1)	TS2015/35 (C2)
ISCR60	105	60	105	TS2015/35 (C1)	TS2015/35 (C2)
ISCR80	130	82	130	TS2015/35 (C1)	TS2015/35 (C2)
JIS37	122	63	122	TS2015/35 (C1)	TS2015/35 (C2)
41kgAS	127	65	127	TS2015/35 (C1)	TS2015/35 (C2)
50kgAS	127	70	154	TS2015/35 (C1)	TS2015/35 (C2)
53kgAS	146	70	157	TS2015/35 (C1)	TS2015/35 (C2)
UIC54	140	70	159	TS2015/35 (C1)	TS2015/35 (C2)
UIC60	150	72	172	TS2015/35 (C1)	TS2015/35 (C2)

### INSTALLATION INSTRUCTIONS

The hexagon headed fixing bolt can be inserted from above or below the supporting structure – see adjacent configurations.

If it is desired to fix the clip with a welded stud, this may be possible. Please consult THRAIL for guidance.

### TIGHTENING TORQUE

Grade 8.8 bolt 390Nm  
Please contact THRAIL for full installation instructions.

### POSITIONING OF SPECIAL WASHER

