

The THRAIL-TS2415/40 through-bolted clips (punched clips) are more convenient and efficient in installation. They are more economical in cost than welded clips. THRAIL-TS2415 adjustable rail fixing clip is specially designed for heavy rails. Its greatest advantage is that it has a very low height after installation and it can help to fix the rail on the narrowest steel girder. It can not only minimize installation cost, but

also meet all usages of the cranes with horizontal guide rollers.

### SPECIFICATIONS

Max side load using grade 8.8 bolt 125kN

15mm horizontal rail adjustment

### DIMENSIONS (mm)

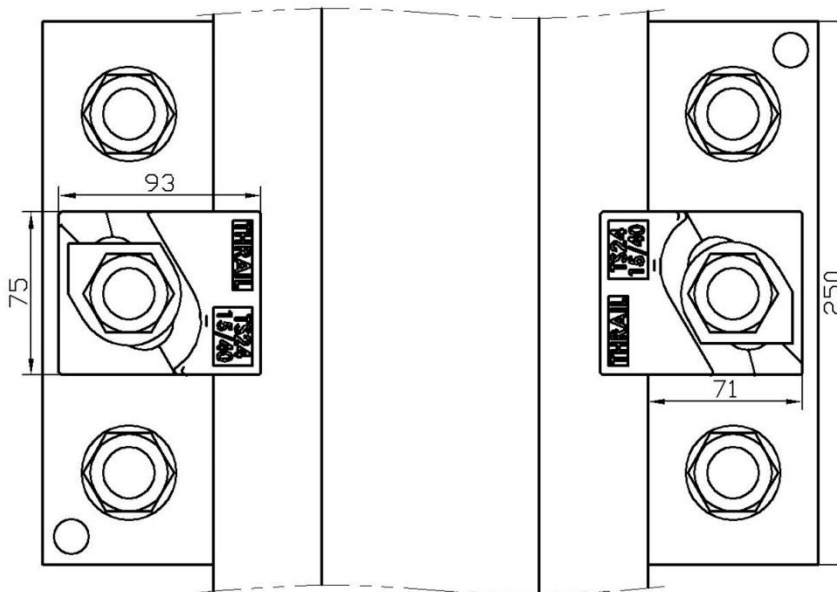
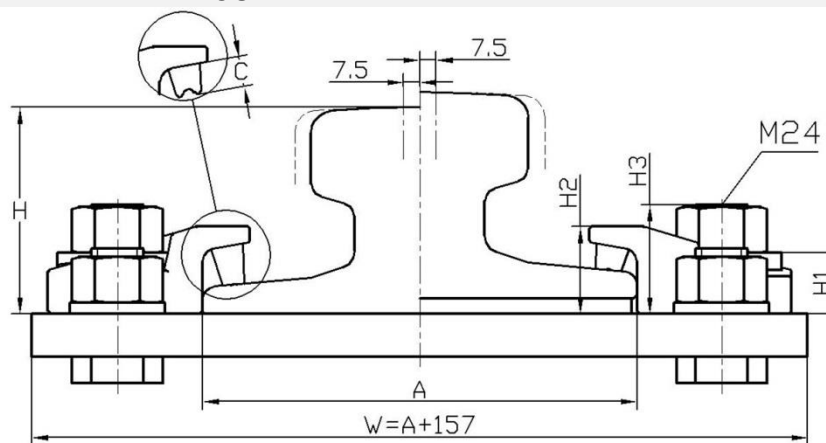
TYPE	H1	H2	H3	WEIGHT
TS2415/40	28	40	50	0.8kg
C (Rubber block thickness)	C1		RAIL WITH PAD	14mm
	C2		RAIL WITHOUT PAD	21mm

### PRODUCT PERFORMANCE

1. It can be used for all kinds of cranes with or without guide rollers.
2. THRAIL rail clip is equipped with vulcanized integral rubber blocks. It can help reduce noise greatly and improve working environment while fastening rails.
3. The rail fixing clip has a self-locking mechanism which makes the clip locked automatically by the pitched clip cap and weldable base with wedge structure theory.
4. It provides a optimal installation size.
5. Rail fixing clip with vulcanized rubber blocks helps control the deviation between rail and crane girder. More over, it provides a great deal of convenience for rail installation and adjustment of the rail lateral movement.

RAIL WITHOUT PAD

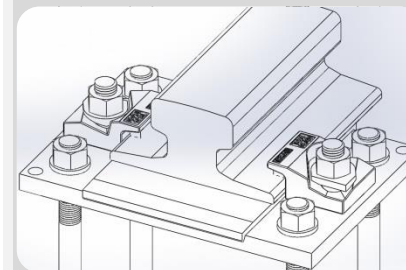
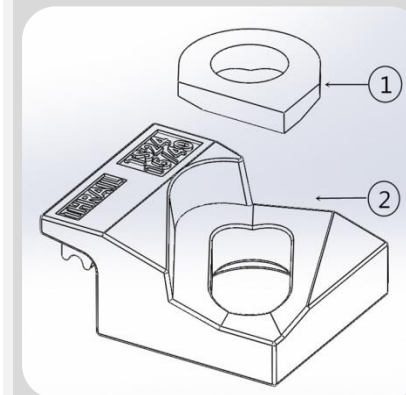
RAIL WITH PAD



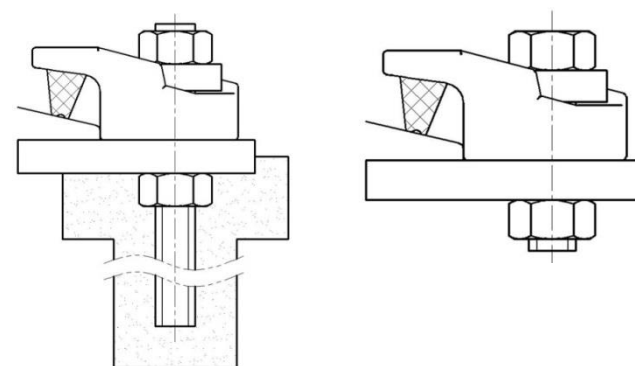
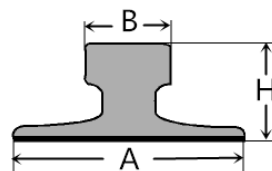
Minimum assembly width -  $W = \text{Rail width (A)} + 157\text{mm}$

### COMPONENTS

1. Special washer
2. Clip with integral rubber block



This clip can be used for a wider selection of rails than illustrated. Please contact THRAIL for the full range of possible rails. All rails can be fastened with bolted or welded base clips. THRAIL may change or improve their products and also alter specifications without notice.



RAIL TYPE	A mm	B mm	H mm	RAIL WITH PAD	RAIL WITHOUT PAD
50kg/m	132	70	152	TS2415/40(C1)	TS2415/40(C2)
QU80	130	80	130	TS2415/40(C1)	TS2415/40(C2)
QU100	150	100	150	TS2415/40(C1)	TS2415/40(C2)
QU120	170	120	170	TS2415/40(C1)	TS2415/40(C2)
A100	200	100	95	TS2415/40(C1)	TS2415/40(C2)
A120	220	120	105	TS2415/40(C1)	TS2415/40(C2)
A150	220	150	150	TS2415/40(C1)	TS2415/40(C2)
S54	125	67	154	TS2415/40(C1)	TS2415/40(C2)
MRS67(135CR)	132	79	146	TS2415/40(C1)	TS2415/40(C2)
MRS86	165	102	102	TS2415/40(C1)	TS2415/40(C2)
MRS87A(PRI85R)	152	102	152	TS2415/40(C1)	TS2415/40(C2)
MRS87B(175CR)	152	102	152	TS2415/40(C1)	TS2415/40(C2)
MRS125	180	120	180	TS2415/40(C1)	TS2415/40(C2)
GCR108	263	61+61	100	TS2415/40(C1)	TS2415/40(C2)
GCR183	280	75	120	TS2415/40(C1)	TS2415/40(C2)
ISCR100	150	102	150	TS2415/40(C1)	TS2415/40(C2)
ISCR120	170	120	170	TS2415/40(C1)	TS2415/40(C2)
JIS50	127	63	145	TS2415/40(C1)	TS2415/40(C2)
JIS60	145	64	174	TS2415/40(C1)	TS2415/40(C2)
CR73	140	100	135	TS2415/40(C1)	TS2415/40(C2)
UIC54E	125	66	161	TS2415/40(C1)	TS2415/40(C2)

### INSTALLATION INSTRUCTIONS

The hexagon headed fixing bolt can be inserted from above or below the supporting structure – see adjacent configurations.

If it is desired to fix the clip with a welded stud, this may be possible. Please consult THRAIL for guidance.

### TIGHTENING TORQUE

Grade 8.8 bolt 600Nm  
Please contact THRAIL for full installation instructions.

### POSITIONING OF SPECIAL WASHER

