

THRAIL-CWS1616 welded rail fixing clips are especially designed for light or heavy rail. They can be used to fix rails even on the narrowest steel beams. The great feature is that its washer with arc base keeps the bolts perpendicular when the clips are used to fix

various rails. This product is applicable to rails for the cranes without horizontal guide rollers.

## SPECIFICATIONS

Max side load using grade 8.8 bolt . 55kN

## DIMENSIONS

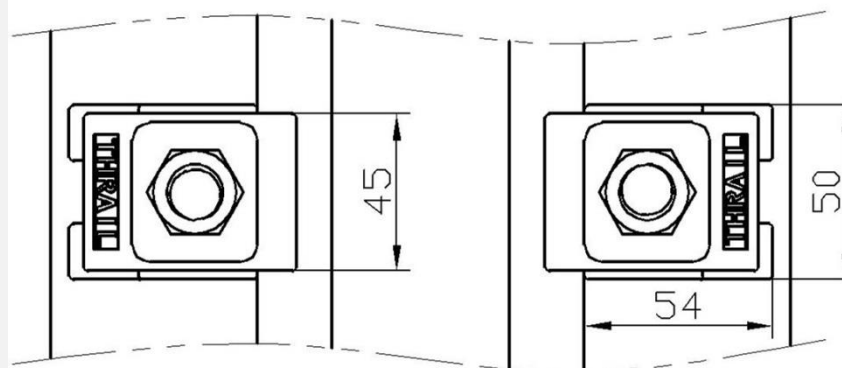
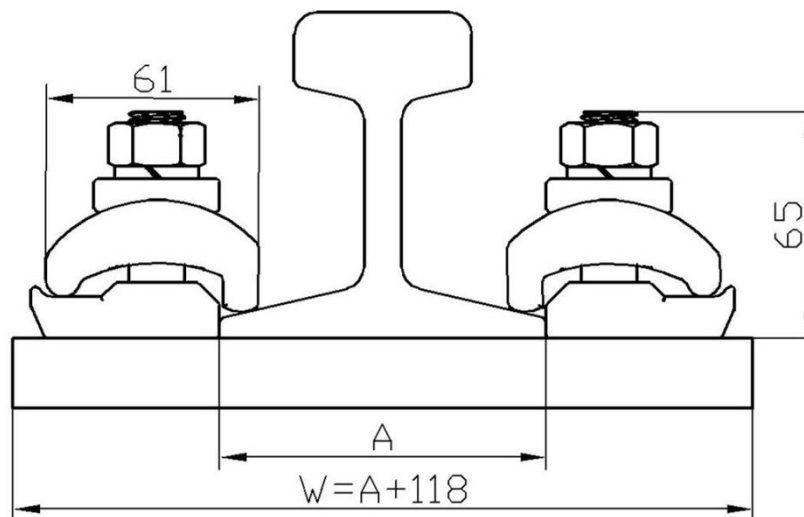
TYPE	POST-INSTALLATION HEIGHT	WEIGHT
CWS1616	65mm	0.6kg

## PRODUCT PERFORMANCE

It provides an optimized installation size. Once the weldable base has been welded to steel bottom soleplate, the washer, clip cap together with the weldable base are tightened by grade 8.8 bolt.

RAIL WITHOUT PAD

RAIL WITH PAD



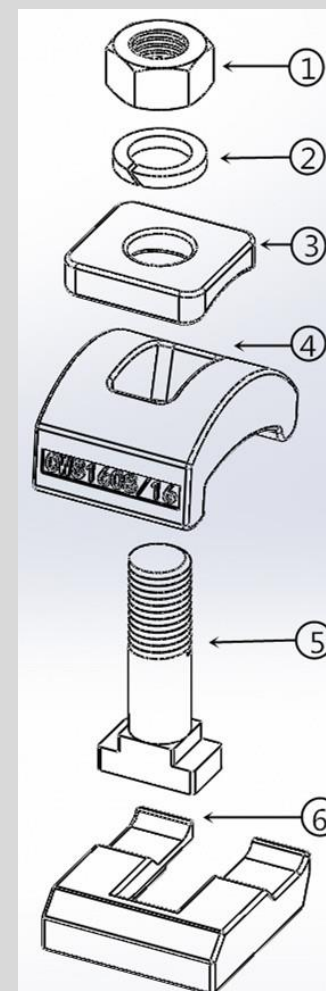
Minimum assembly width

$W = \text{Rail width (A)} + 118\text{mm}$

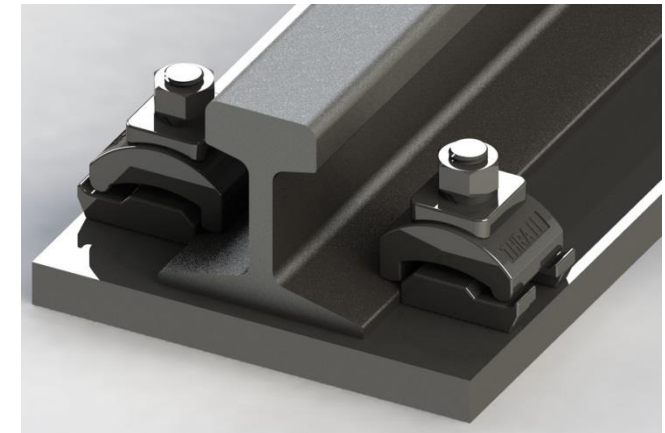
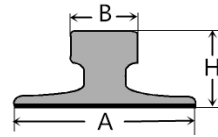
NOTE: For ground track with M20 anchor bolts  $W = \text{Rail width (A)} + 130\text{mm}$

## COMPONENTS

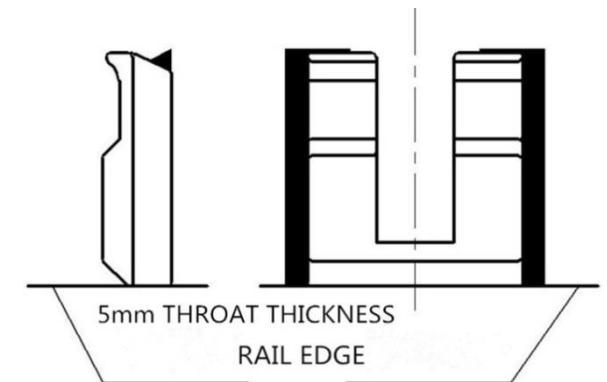
1. Nut
2. Spring washer
3. Special washer
4. Clip cap
5. M16 Captive bolt
6. Weldable base



This clip can be used for a wider selection of rails than illustrated. Please contact THRAIL for the full range of possible rails. All rails can be fastened with bolted or welded base clips. THRAIL may change or improve their products and also alter specifications without notice.



WELD INSTRUCTION



INSTALLATION INSTRUCTIONS

Weld all round the clip base, except the side closest and parallel to the rail, with a 4mm throat thickness fillet weld, using low hydrogen electrodes.

If a continuous weld around the clip base is required, this is possible. Please consult THRAIL for guidance.

TIGHTENING TORQUE 200Nm

Please contact THRAIL, for full installation instructions

RAIL TYPE	A mm	B mm	H mm	RAIL WITH PAD	RAIL WITHOUT PAD
15kg/m	80	43	80	Not applicable	THRAIL-CWS1616
18 kg/m	80	40	90	Not applicable	THRAIL-CWS1616
22 kg/m	94	50	94	Not applicable	THRAIL-CWS1616
24 kg/m	92	107	51	Not applicable	THRAIL-CWS1616
30 kg/m	108	60	107	Not applicable	THRAIL-CWS1616
38kg/m	114	68	134	Not applicable	THRAIL-CWS1616
43kg/m	114	70	140	Not applicable	THRAIL-CWS1616
50kg/m	132	70	152	Not applicable	THRAIL-CWS1616
QU70	120	70	120	Not applicable	THRAIL-CWS1616
QU80	130	80	130	Not applicable	THRAIL-CWS1616
A45	125	45	55	Not applicable	THRAIL-CWS1616
A55	150	55	65	Not applicable	THRAIL-CWS1616
A65	175	65	75	Not applicable	THRAIL-CWS1616
A75	200	75	85	Not applicable	THRAIL-CWS1616
S30	108	60	108	Not applicable	THRAIL-CWS1616
S33	105	58	134	Not applicable	THRAIL-CWS1616
S41	125	67	138	Not applicable	THRAIL-CWS1616
S49	125	67	149	Not applicable	THRAIL-CWS1616
ISCR60	105	60	105	Not applicable	THRAIL-CWS1616
ISCR80	130	82	130	Not applicable	THRAIL-CWS1616
ASCE80	127	64	127	Not applicable	THRAIL-CWS1616
ASCE85	132	65	132	Not applicable	THRAIL-CWS1616
ISCOR48	127	68	150	Not applicable	THRAIL-CWS1616
ISCOR57	140	70	16165	Not applicable	THRAIL-CWS1616
JIS37	122	63	122	Not applicable	THRAIL-CWS1616
31kgAS	108	64	118	Not applicable	THRAIL-CWS1616
41kgAS	127	64	137	Not applicable	THRAIL-CWS1616
50kgAS	127	70	154	Not applicable	THRAIL-CWS1616
UIC54	140	70	159	Not applicable	THRAIL-CWS1616
UIC60	150	72	172	Not applicable	THRAIL-CWS1616
56 E 1	140	70	159	Not applicable	THRAIL-CWS1616