

THRAIL-9116/08/37 adjustable rail fixing clip is specially designed for light rail. Its greatest advantage is that it has a very low height after installation and it can help to fix the rail on the narrowest steel girder. It can not only minimize installation cost, but also meet all usages of the cranes with horizontal guide rollers.

### SPECIFICATIONS

Max side load using grade 8.8 bolt 55kN

8mm horizontal rail adjustment

### DIMENSIONS (mm)

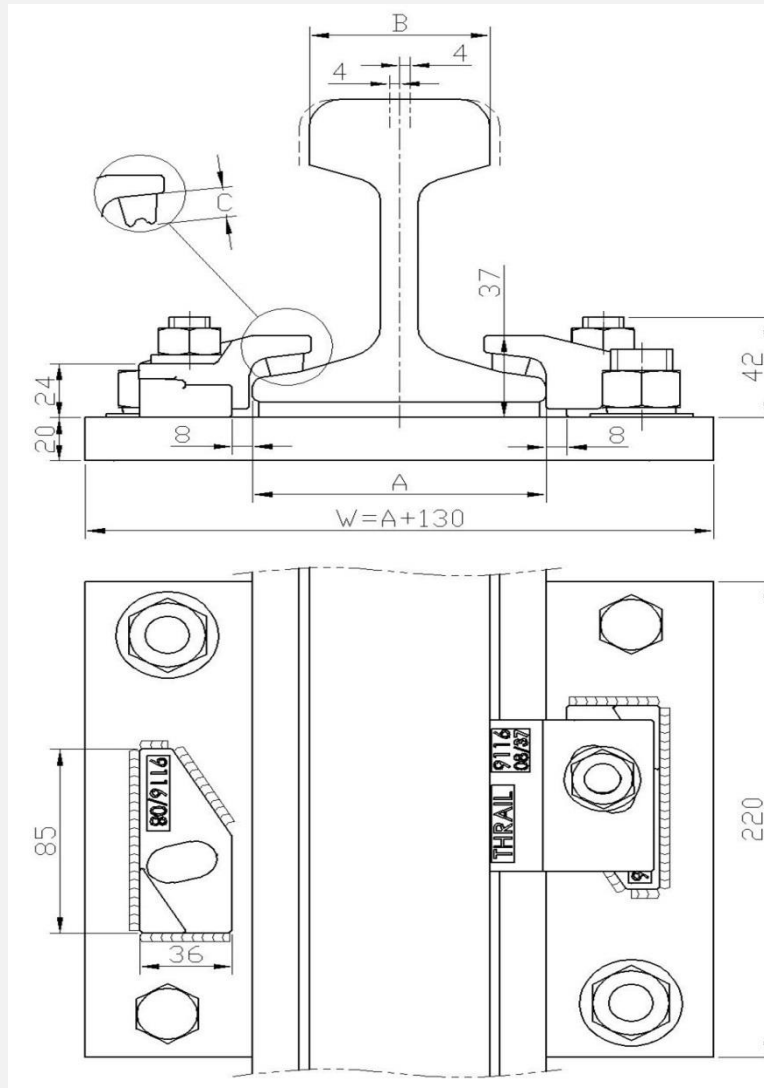
TYPE	H1	H2	H3	WEIGHT
9116/08/37	24	37	42	0.75kg
C (Rubber block thickness)	C1	RAIL WITH PAD		14mm
	C2	RAIL WITHOUT PAD		21mm

### PRODUCT PERFORMANCE

1. It can be used for all kinds of cranes with or without guide rollers.
2. THRAIL rail clip is equipped with vulcanized integral rubber blocks. It can help reduce noise greatly and improve working environment while fastening rails.
3. The rail fixing clip has a self-locking mechanism which makes the clip locked automatically by the pitched clip cap and weldable base with wedge structure theory.
4. It provides a optimal installation size. There is no need to drill a hole on the steel girder when installation. Also the bolts don't need to be threaded through the hole from the beneath of the steel girder. Workers only need to weld the weldable base on the steel rail support. The two parts (clip cap and weldable base) are locked together with grade 8.8 bolt.
5. Rail fixing clip with vulcanized rubber blocks helps control the deviation between rail and crane girder. It can be installed easily with impact wrench. More over, it provides a great deal of convenience for rail installation and adjustment of the rail lateral movement.

### RAIL WITHOUT PAD

### RAIL WITH PAD



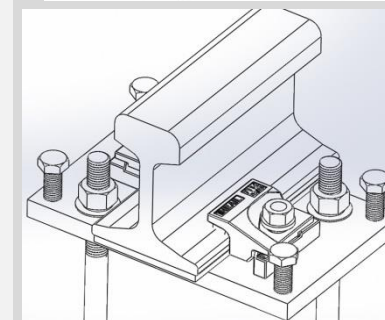
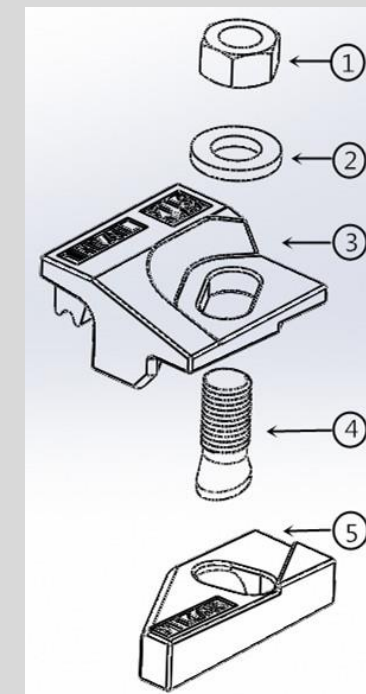
Minimum assembly width

$$W = \text{Rail width (A)} + 100\text{mm} \quad W_1 = \text{Rail width (A)} + 16\text{mm}$$

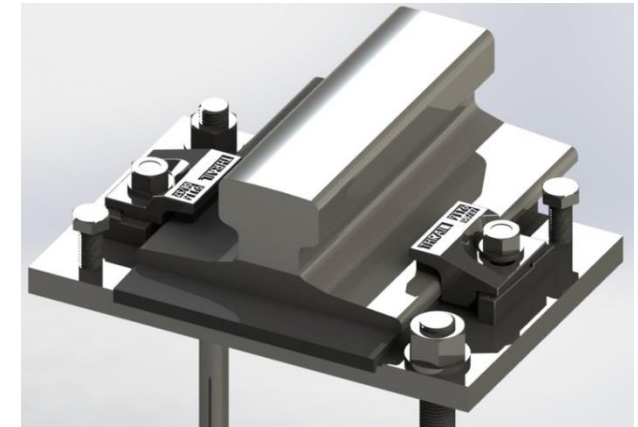
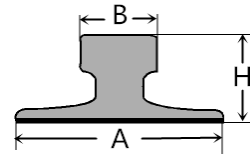
NOTE: For ground track with M20 anchor bolts  $W = \text{Rail width (F)} + 130\text{mm}$

### COMPONENTS

1. Nut
2. Hardened washer
3. Clip cap with integral rubber block
4. M16 Captive bolt
5. Weldable base

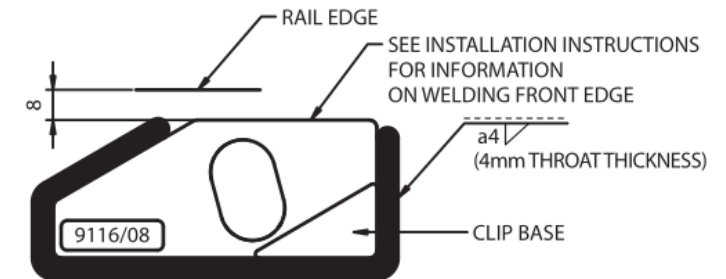


This clip can be used for a wider selection of rails than illustrated. Please contact THRAIL for the full range of possible rails. All rails can be fastened with bolted or welded base clips. THRAIL may change or improve their products and also alter specifications without notice.



RAIL TYPE	A mm	B mm	H mm	RAIL WITH PAD	RAIL WITHOUT PAD
38kg/m	114	68	134	9116/08/37(C1)	9116/08/37(C2)
43kg/m	114	70	140	9116/08/37(C1)	9116/08/37(C2)
50kg/m	132	70	152	9116/08/37(C1)	9116/08/37(C2)
QU70	120	70	120	9116/08/37(C1)	9116/08/37(C2)
QU80	130	80	130	9116/08/37(C1)	9116/08/37(C2)
A55	150	55	65	9116/08/37(C1)	9116/08/37(C2)
A65	175	65	75	9116/08/37(C1)	9116/08/37(C2)
A75	200	75	85	9116/08/37(C1)	9116/08/37(C2)
A100	200	100	95	9116/08/37(C1)	9116/08/37(C2)
S30	108	60	108	9116/08/37(C1)	9116/08/37(C2)
S33	105	58	134	9116/08/37(C1)	9116/08/37(C2)
S41	125	67	138	9116/08/37(C1)	9116/08/37(C2)
S49	125	67	149	9116/08/37(C1)	9116/08/37(C2)
ISCR60	105	60	105	9116/08/37(C1)	9116/08/37(C2)
ISCR80	130	82	130	9116/08/37(C1)	9116/08/37(C2)
ASCE80	127	64	127	9116/08/37(C1)	9116/08/37(C2)
ASCE85	132	65	132	9116/08/37(C1)	9116/08/37(C2)
ISCOR48	127	68	150	9116/08/37(C1)	9116/08/37(C2)
ISCOR57	140	70	165	9116/08/37(C1)	9116/08/37(C2)
JIS37	122	63	122	9116/08/37(C1)	9116/08/37(C2)
31kgAS	108	64	118	9116/08/37(C1)	9116/08/37(C2)
41kgAS	127	64	137	9116/08/37(C1)	9116/08/37(C2)
50kgAS	127	70	154	9116/08/37(C1)	9116/08/37(C2)
UIC54	140	70	159	9116/08/37(C1)	9116/08/37(C2)
UIC60	150	72	172	9116/08/37(C1)	9116/08/37(C2)
56 E 1	140	70	159	9116/08/37(C1)	9116/08/37(C2)
GCR108	263	61+61	100	9116/08/37(C1)	9116/08/37(C2)

WELD INSTRUCTION



INSTALLATION INSTRUCTIONS

Weld all round the clip base, except the side closest and parallel to the rail, with a 4mm throat thickness fillet weld, using low hydrogen electrodes.

If a continuous weld around the clip base is required, this is possible. Please consult THRAIL for guidance.

TIGHTENING TORQUE 125Nm

Please contact THRAIL, for full installation instructions