

THRAIL-9216/08/40 adjustable rail fixing clip is specially designed for heavy rail. Its greatest advantage is that it has a very low height after installation and it can help to fix the rail on the narrowest steel girder. It can not only minimize installation cost, but also meet all usages of the cranes with horizontal guide rollers.

SPECIFICATIONS

Max side load using grade 8.8 bolt 130kN

8mm horizontal rail adjustment

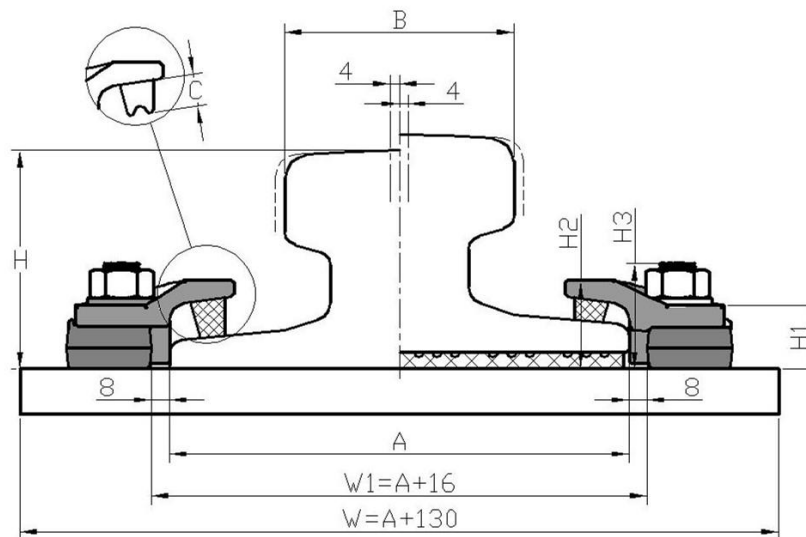
DIMENSIONS (mm)

TYPE	H1	H2	H3	ESTIMATED WEIGHT	
9216/08/40	28	40	49	1.55kg	
Rubber block thickness	RAIL WITH PAD		RAIL WITHOUT PAD		
C	C1	10	C3	17	
	C2	14	C4	21	

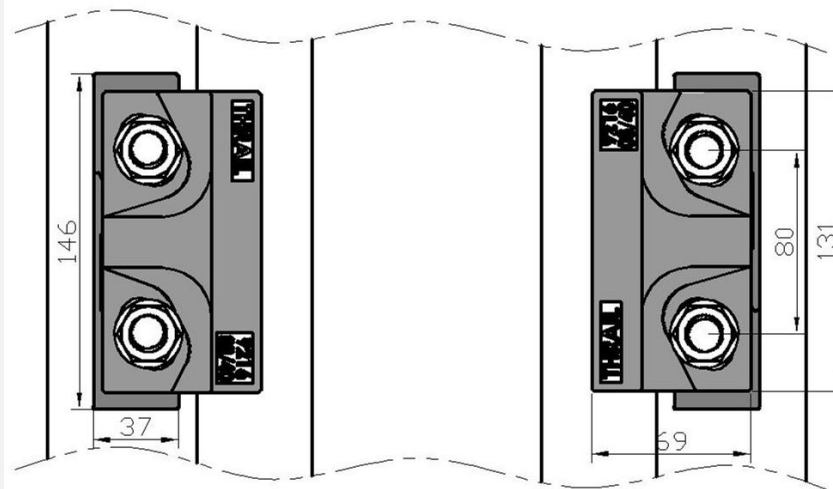
PRODUCT PERFORMANCE

1. It can be used for all kinds of cranes with or without guide rollers.
2. THRAIL rail clip is equipped with vulcanized integral rubber blocks. It can help reduce noise greatly and improve working environment while fastening rails.
3. The rail fixing clip has a self-locking mechanism which makes the clip locked automatically by the pitched clip cap and weldable base with wedge structure theory.
4. It provides an optimal installation size. There is no need to drill a hole on the steel girder when installation. Also the bolts don't need to be threaded through the hole from the beneath of the steel girder. Workers only need to weld the weldable base on the steel rail support. The two parts (clip cap and weldable base) are locked together with grade 8.8 bolt.
5. Rail fixing clip with vulcanized rubber blocks helps control the deviation between rail and crane girder. It can be installed easily with impact wrench. Moreover, it provides a great deal of convenience for rail installation and adjustment of the rail lateral movement.

RAIL WITHOUT PAD



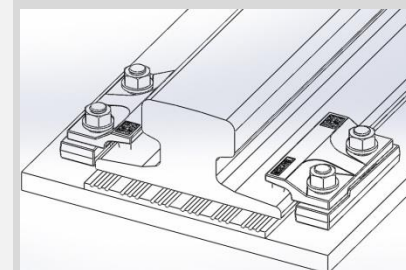
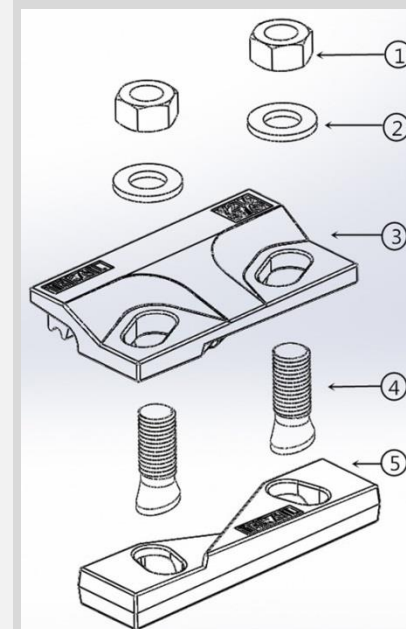
RAIL WITH PAD



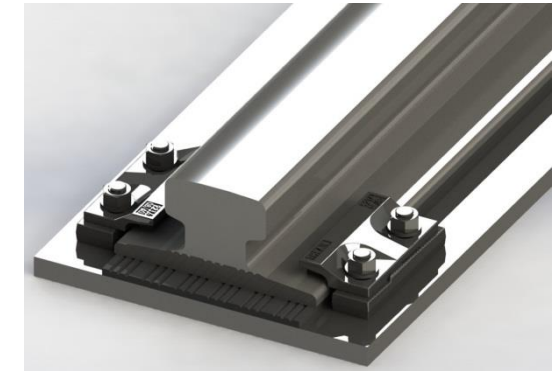
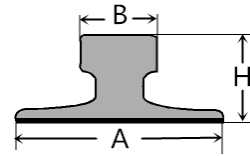
Minimum assembly width - $W = \text{Rail width (A)} + 100\text{mm}$ $V = \text{Rail width (A)} + 16\text{mm}$ NOTE: For ground track with M20 anchor bolts $W = \text{Rail width (A)} + 130\text{mm}$

COMPONENTS

1. Nut
2. Hardened washer
3. Clip cap with integral rubber block
4. M16 Captive bolt
5. Weldable base

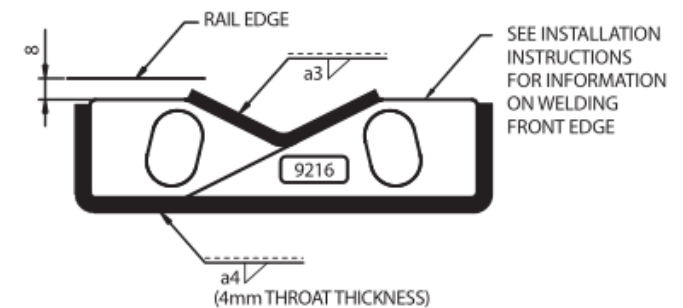


This clip can be used for a wider selection of rails than illustrated. Please contact THRAIL for the full range of possible rails. All rails can be fastened with bolted or welded base clips. THRAIL may change or improve their products and also alter specifications without notice.



RAIL TYPE	A mm	B mm	H mm	RAIL WITH PAD	RAIL WITHOUT PAD
P43	114	70	140	9216/08/40 (C2)	9216/08/40 (C4)
P50	132	70	152	9216/08/40 (C2)	9216/08/40 (C4)
P60	150	73	176	9216/08/40 (C2)	9216/08/40 (C4)
QU70	120	70	120	9216/08/40 (C2)	9216/08/40 (C4)
QU80	130	80	130	9216/08/40 (C2)	9216/08/40 (C4)
QU100	150	100	150	9216/08/40 (C2)	9216/08/40 (C4)
QU120	170	120	170	9216/08/40 (C1)	9216/08/40 (C3)
A75	200	75	85	9216/08/40 (C2)	9216/08/40 (C4)
A100	200	100	95	9216/08/40 (C2)	9216/08/40 (C4)
A120	220	120	105	9216/08/40 (C2)	9216/08/40 (C4)
S49	125	67	149	9216/08/40 (C2)	9216/08/40 (C4)
S54	125	67	154	9216/08/40 (C2)	9216/08/40 (C4)
89kgCR	178	102	114	9216/08/40 (C1)	9216/08/40 (C3)
MRS86	165	102	102	9216/08/40 (C2)	9216/08/40 (C4)
MRS87A	152	102	152	9216/08/40 (C1)	9216/08/40 (C3)
MRS221	220	220	160	9216/08/40 (C1)	9216/08/40 (C3)
GCR183	280	75	120	9216/08/40 (C2)	9216/08/40 (C4)
ISCR80	130	82	130	9216/08/40 (C2)	9216/08/40 (C4)
ISCR100	150	102	150	9216/08/40 (C2)	9216/08/40 (C4)
ISCR120	170	120	170	9216/08/40 (C2)	9216/08/40 (C4)
JIS50N	127	63	145	9216/08/40 (C2)	9216/08/40 (C4)
JIS60	145	64	174	9216/08/40 (C2)	9216/08/40 (C4)
CR73	140	100	135	9216/08/40 (C2)	9216/08/40 (C4)
CR100	155	120	150	9216/08/40 (C1)	9216/08/40 (C3)

WELD INSTRUCTION



INSTALLATION INSTRUCTIONS

Weld along back and sides of clip base with a 4mm throat thickness fillet weld. Weld in 'V' with a 3mm throat thickness fillet weld. Use low hydrogen electrodes.

If a continuous weld around the clip base is required, this is possible. Please consult THRAIL for guidance.

TIGHTENING TORQUE 125Nm

Please contact THRAIL, for full installation instructions.