

The THRAIL-9220/20/40 adjustable rail fixing clip is specially designed for largest rail. Its greatest advantage is that it has a very low height after installation and it can help to fix the rail on the narrowest steel girder. It can not only minimize installation cost, but also meet all usages

of the cranes with horizontal guide rollers.

SPECIFICATIONS

Max side load using grade 8.8 bolt 200kN

20mm horizontal rail adjustment

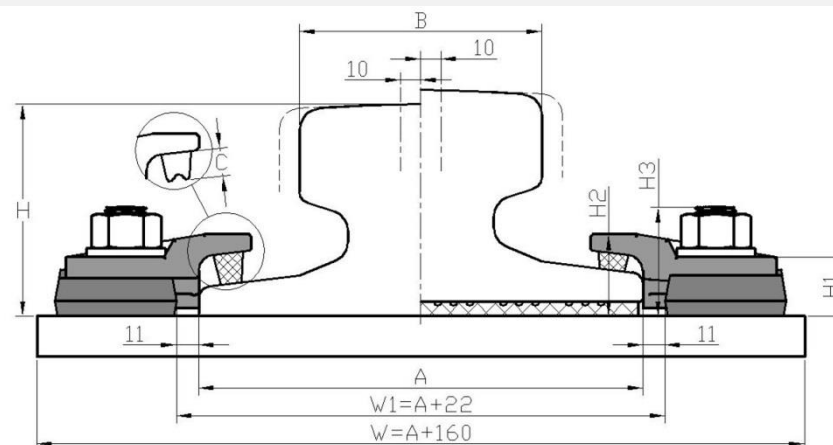
DIMENSIONS (mm)

TYPE	H1	H2	H3	ESTIMATED WEIGHT	
9220/20/40	33	40	57	2.65kg	
Rubber block thickness	RAIL WITH PAD		RAIL WITHOUT PAD		
C	C1	10	C3	17	
	C2	14	C4	21	

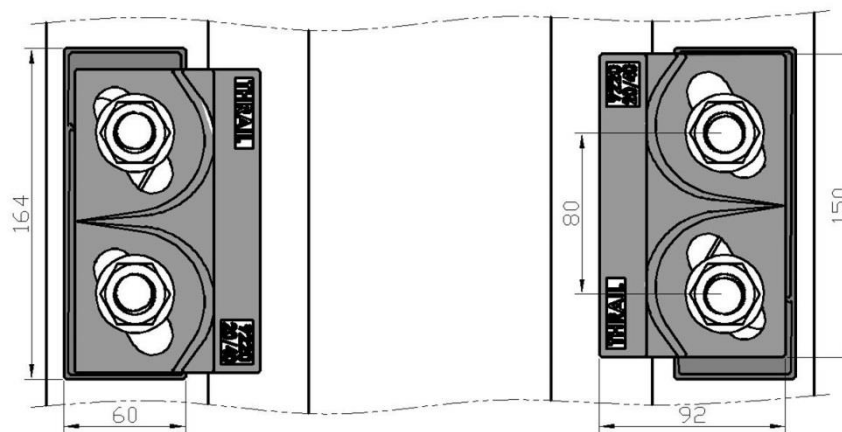
PRODUCT PERFORMANCE

1. It can be used for all kinds of cranes with or without guide rollers.
2. THRAIL rail clip is equipped with vulcanized integral rubber blocks. It can help reduce noise greatly and improve working environment while fastening rails.
3. The rail fixing clip has a self-locking mechanism which makes the clip locked automatically by the pitched clip cap and weldable base with wedge structure theory.
4. It provides an optimal installation size. There is no need to drill a hole on the steel girder when installation. Also the bolts don't need to be threaded through the hole from the beneath of the steel girder. Workers only need to weld the weldable base on the steel rail support. The two

RAIL WITHOUT PAD



RAIL WITH PAD



Minimum assembly width

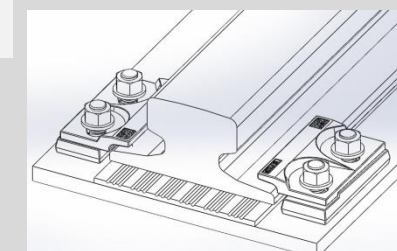
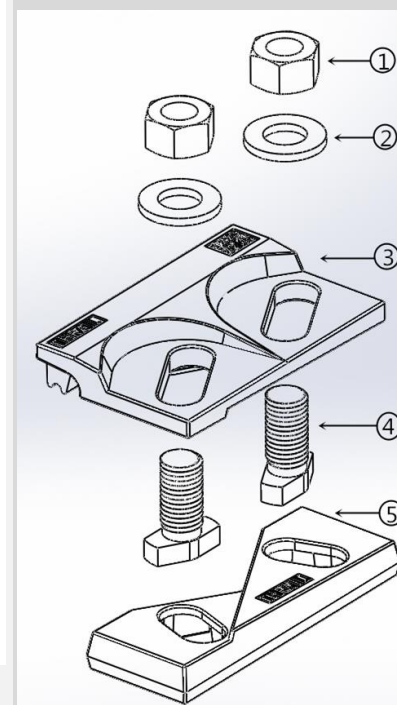
$$W = \text{Rail width (A)} + 160\text{mm} \quad W1 = \text{Rail width (A)} + 22\text{mm}$$

parts (clip cap and weldable base) are locked together with grade 8.8 bolt.

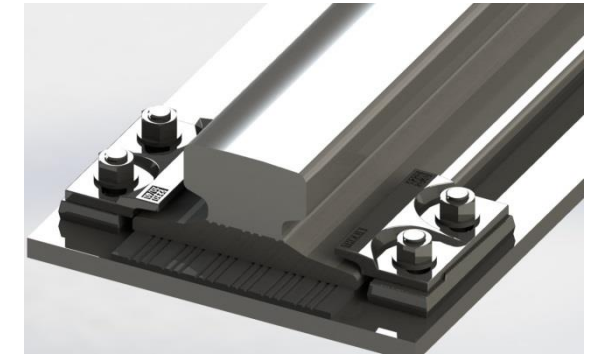
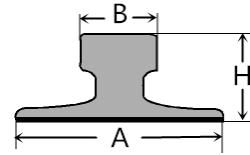
5. Rail fixing clip with vulcanized rubber blocks helps control the deviation between rail and crane girder. It can be installed easily with impact wrench. Moreover, it provides a great deal of convenience for rail installation and adjustment of the rail lateral movement.

COMPONENTS

1. Nut
2. Hardened washer
3. Clip cap with integral rubber block
4. M20 Captive bolt
5. Weldable base

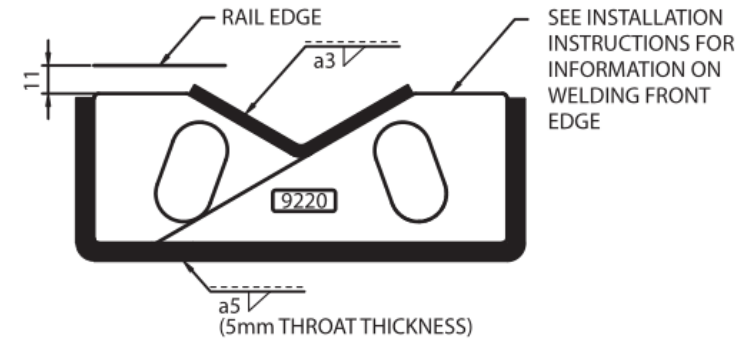


This clip can be used for a wider selection of rails than illustrated. Please contact THRAIL for the full range of possible rails. All rails can be fastened with bolted or welded base clips. THRAIL may change or improve their products and also alter specifications without notice.



RAIL TYPE	A mm	B mm	H mm	RAIL WITH PAD	RAIL WITHOUT PAD
QU100	150	100	150	9220/20/40 (C2)	9220/20/40 (C4)
QU120	170	120	170	9220/20/40 (C1)	9220/20/40 (C3)
A100	200	100	95	9220/20/40 (C2)	9220/20/40 (C4)
A120	220	120	105	9220/20/40 (C2)	9220/20/40 (C4)
A150	220	150	150	9220/20/40 (C1)	9220/20/40 (C3)
89kgCR	178	102	114	9220/20/40 (C1)	9220/20/40 (C3)
164kgCR	230	140	150	-	-
MRS86	165	102	102	9220/20/40 (C2)	9220/20/40 (C4)
MRS87A	152	102	152	9220/20/40 (C1)	9220/20/40 (C3)
MRS125	180	120	180	-	9220/20/40 (C3)
MRS192	229	140	157	-	9220/20/40 (C1)
MRS221	220	220	160	9220/20/40 (C1)	9220/20/40 (C3)
ISCR100	150	102	150	9220/20/40 (C2)	9220/20/40 (C4)
ISCR120	170	120	170	9220/20/40 (C1)	9220/20/40 (C3)
ISCR140	170	140	170	9220/20/40 (C1)	9220/20/40 (C3)
ISCR57	140	70	165	9220/20/40 (C2)	9220/20/40 (C4)
73kgAS	146	70	157	9220/20/40 (C1)	9220/20/40 (C3)
86kgAS	165	102	102	9220/20/40 (C1)	9220/20/40 (C3)
CR73	140	100	135	9220/20/40 (C2)	9220/20/40 (C4)
CR100	155	120	150	9220/20/40 (C1)	9220/20/40 (C3)

WELD INSTRUCTION



INSTALLATION INSTRUCTIONS

Weld along back and sides of clip base with a 5mm throat thickness fillet weld. Weld in 'V' with a 3mm throat thickness fillet weld. Use low hydrogen electrodes.

If a continuous weld around the clip base is required, this is possible. Please consult THRAIL for guidance.

TIGHTENING TORQUE 250Nm

Please contact GANTRAIL, for full installation instructions.