

THRAIL-BWS2015/41 adjustable rail fixing clip is specially designed for heavy rail. Its greatest advantage is that it has a very low height after installation and it can help to fix the rail on the narrowest steel girder. It can not only minimize installation cost, but also meet all usages of the cranes with horizontal guide rollers.

SPECIFICATIONS

Max side load using grade 8.8 bolt 120kN
10mm horizontal rail adjustment

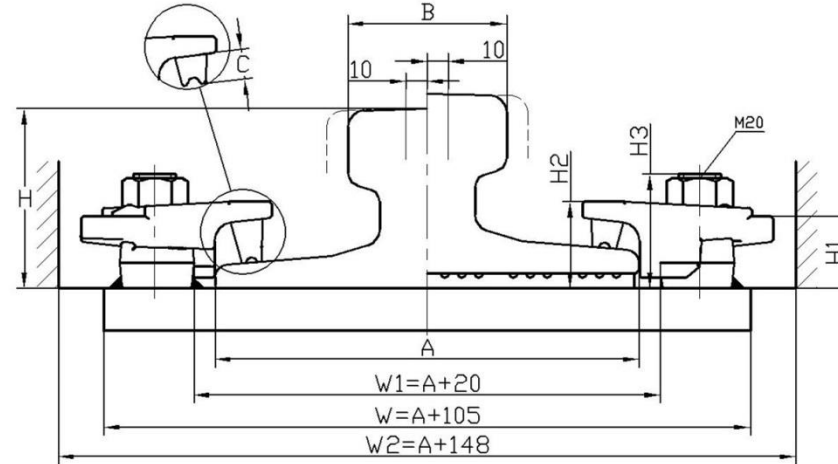
DIMENSIONS (mm)

PRODUCT PERFORMANCE

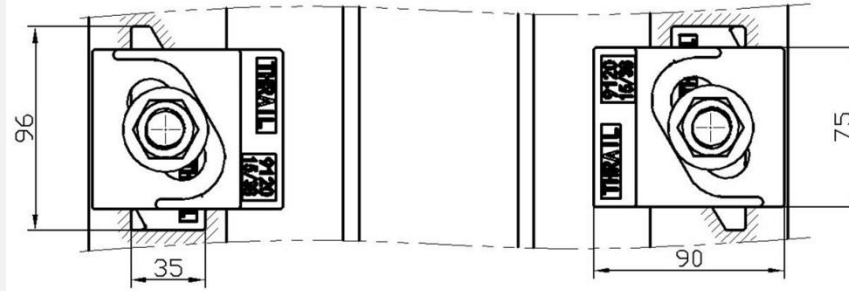
TYPE	H1	H2	H3	ESTIMATED WEIGHT	
BWS2015/41	34	41	54	1.2kg	
Rubber block thickness	RAIL WITH PAD		RAIL WITHOUT PAD		
C	C1	14	C2	21	
BWS2015/41 comprises BWS2015 base and 9120/15/38 cap					

1. It can be used for all kinds of cranes with or without guide rollers.
2. THRAIL rail clip is equipped with vulcanized integral rubber blocks. It can help reduce noise greatly and improve working environment while fastening rails.
3. The rail fixing clip has a self-locking mechanism which makes the clip locked automatically by the pitched clip cap and weldable base with wedge structure theory.
4. It provides an optimal installation size. It's no need to drill hole on the steel girder when installation. Also the bolts don't need to be threaded through the hole from beneath of the steel girder. Workers only need to weld the weldable base on the steel rail support. The two parts (clip cap and weldable base) are locked together with grade 8.8 bolt.
5. Rail fixing clip with vulcanized rubber blocks helps control the deviation between rail and crane girder. It can be installed easily with impact wrench. Moreover, it provides a great deal of convenience for rail installation and adjustment of the rail lateral movement.

RAIL WITHOUT PAD

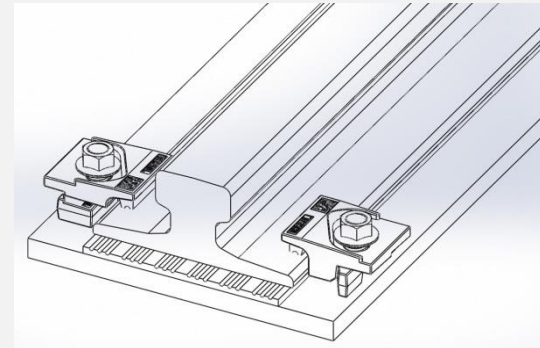


RAIL WITH PAD



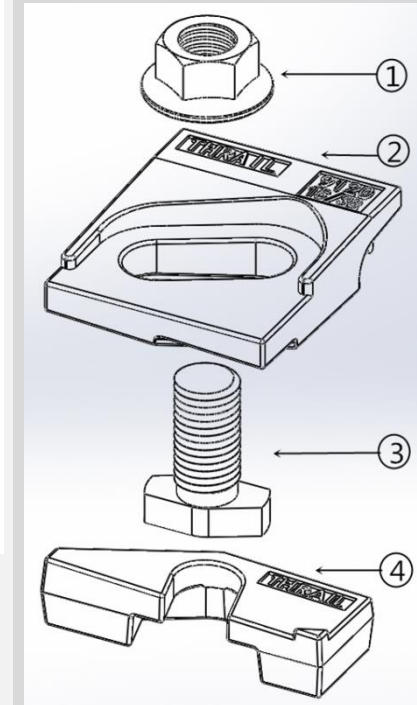
Minimum assembly width

- W = Rail width (A) + 105mm
- W1 = Rail width (A) + 20mm
- W2 = Rail width (A) + 148mm

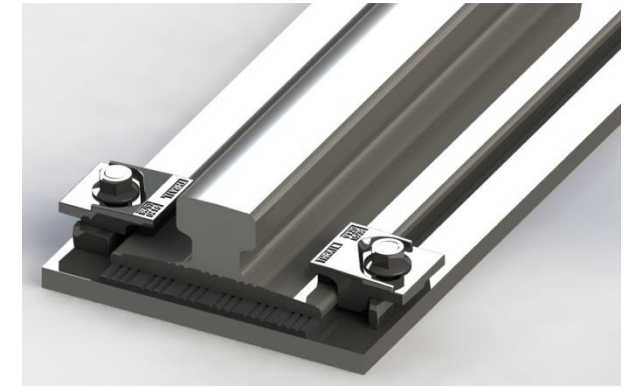
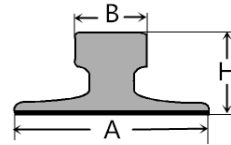


COMPONENTS

1. Flange Nut
2. Clip cap with integral rubber block
3. M20 Captive bolt
4. Weldable base

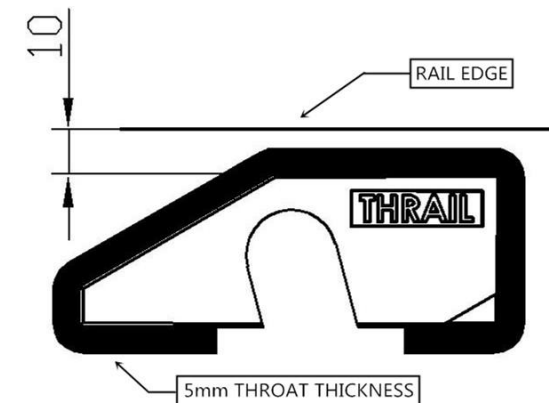


This clip can be used for a wider selection of rails than illustrated. Please contact THRAIL for the full range of possible rails. All rails can be fastened with bolted or welded base clips. THRAIL may change or improve their products and also alter specifications without notice.



RAIL TYPE	A mm	B mm	H mm	RAIL WITH PAD	RAIL WITHOUT PAD
P50	132	70	152	BWS2015/41(C1)	BWS2015/41(C2)
P60	150	73	176	BWS2015/41(C1)	BWS2015/41(C2)
QU70	120	70	120	BWS2015/41(C1)	BWS2015/41(C2)
QU80	130	80	130	BWS2015/41(C1)	BWS2015/41(C2)
QU100	150	100	150	BWS2015/41(C1)	BWS2015/41(C2)
QU120	170	120	170	BWS2015/41(C1)	BWS2015/41(C2)
A100	200	100	95	BWS2015/41(C1)	BWS2015/41(C2)
A120	220	120	105	BWS2015/41(C1)	BWS2015/41(C2)
A150	220	150	150	BWS2015/41(C1)	BWS2015/41(C2)
89kgCR	178	102	114	BWS2015/41(C1)	BWS2015/41(C2)
MRS86	165	102	102	BWS2015/41(C1)	BWS2015/41(C2)
MRS87	152	102	152	BWS2015/41(C1)	BWS2015/41(C2)
MRS125	180	120	180	BWS2015/41(C1)	BWS2015/41(C2)
GCR183	280	75	120	BWS2015/41(C1)	BWS2015/41(C2)
ISCR100	150	102	150	BWS2015/41(C1)	BWS2015/41(C2)
ISCR120	170	120	170	BWS2015/41(C1)	BWS2015/41(C2)
JIS50	127	63	145	BWS2015/41(C1)	BWS2015/41(C2)
JIS60	145	64	174	BWS2015/41(C1)	BWS2015/41(C2)
CR73	140	100	135	BWS2015/41(C1)	BWS2015/41(C2)
CR100	155	120	150	BWS2015/41(C1)	BWS2015/41(C2)
86kg	AS16	102	102	BWS2015/41(C1)	BWS2015/41(C2)
UIC54E	125	66	161	BWS2015/41(C1)	BWS2015/41(C2)

WELD INSTRUCTION



INSTALLATION INSTRUCTIONS

Weld all round the clip base with a 5mm throat thickness fillet weld, using low hydrogen electrodes. Recommended electrodes AWS E7018 or E7028. Clip base is made from weldable grade steel.
 * For rail without pad, weld closest to and parallel with the rail must be omitted. Please consult THRAIL for guidance.
TIGHTENING TORQUE 350Nm
 Please contact THRAIL, for full installation instructions.